

# SPECTRUM PRECISION AND PERFORMANCE IN PC INSTRUMENTATION



2017

Digitizers | Transient Recorders | Arbitrary Waveform and Pattern Generators | Data Acquisition Instruments  
for PCI Express, LXI, PXIe, PXI, PCI-X, PCI and CompactPCI





## Preface

Dear Valued Customer,

Welcome to the latest edition of the Spectrum catalog! We take great pleasure in providing you with this document which gives you a summary of our most popular products, instruments and accessories.

At Spectrum we aim to provide PC based technology that best matches your test and measurement needs. As such, our product portfolio consists of an extensive range of modular digitizers, generators, I/O cards and systems. The products are available in the most widely used standards such as PCIe, PXIe and LXI.



### Digitizers

The modern digitizer has become one of the most flexible testing tools available to engineers and scientists. They allow measurements to be made with speed and precision. They are fully programmable and offer smart acquisition modes allowing them to be deployed in a number of different testing situations. For example, digitizers can be embedded in a PC to create a custom analyzer or data logger. Modules can be mixed and matched to build large multi-channel data acquisition systems. Or they can even be used to replace slower, less accurate, oscilloscopes in automated testing applications.

To give you the widest performance choice Spectrum currently manufactures more than 450 digitizer cards and instruments. The cards offer from one to sixteen channels while instruments can have up to forty-eight channels. For applications that may need even more channels we can create custom systems to match the necessary requirements.

Spectrum digitizers let you select the performance level you need. For example, models are available with sampling rates from 100 kS/s up to 5 GS/s and vertical resolution from 8 to 16 bit. They come with versatile front-end electronics which can be programmed to adjust features such as gain, offset, coupling and termination. Large on-board memories and advanced acquisition modes are available to make it easy to capture, store and analyze even the most complex signals.

Using a Spectrum digitizer is straight forward. All the products follow a common software structure and support is provided for the most popular programming languages. Furthermore, the common software structure means that any development that's made for one product can easily be adapted to another. For users who don't want to program we offer our SBench 6 software. SBench 6 is an easy to use tool with an intuitive graphical interface that allows full digitizer control, waveform display, storage and analysis.

### Generators

Spectrum offers an extensive line-up of more than 50 different Arbitrary Waveforms Generators (AWG's) that are ideal for creating and generating an almost unlimited number of waveforms. Models are available with output rates from 20 MS/s up to 1.25 GS/s and resolutions from 8 to 16 bit. AWG's are perfect for generating complex modulated signals or for reproducing those wave shapes found in almost any electronic system. Capture a signal with a scope or digitizer, transfer it to the AWG, and then reproduce or modify it as desired. Combined with a digitizer, AWG's allow easy testing in many stimulus-response or capture-replay applications.

### I/O Modules

For digital acquisition and generation we also have a range of high speed I/O products. These offer acquisition rates up to 720 MHz (on 32 channels synchronously) and allow high speed logic analysis, data logging and pattern generation.

At Spectrum we understand that hardware is just a part of the total measurement solution and that's why we aim to provide the widest choice of software tools and direct engineering support. Whether you develop your own software, or use our turn-key solutions, we want to make the process both easy and convenient.

We hope you find this catalogue a helpful way to view the range of products that we have available. For more detailed product information we suggest that you visit our web site at [www.spectrum-instrumentation.com](http://www.spectrum-instrumentation.com) where you will find additional documentation such as full product data sheets, notes and manuals. As always, we are at your service and happy to receive requests and feedback.

Yours Sincerely,

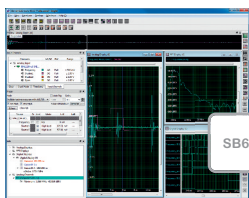
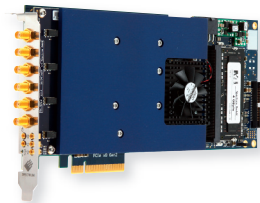
Gisela Hassler  
Managing Director

Oliver Rovini  
Technical Director



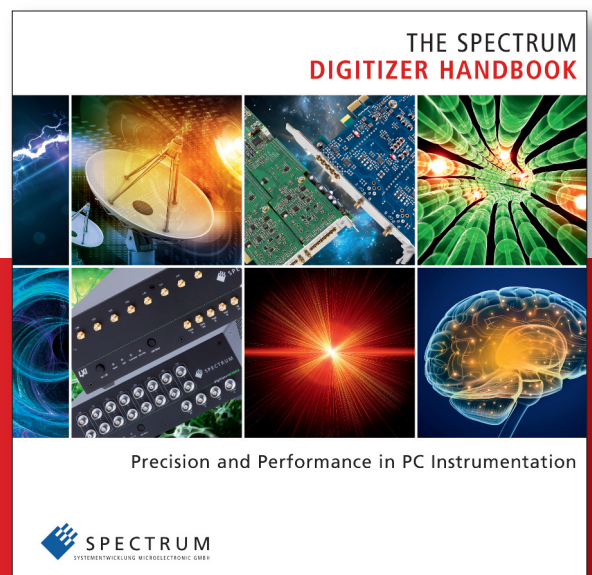
## Table of Contents

	Preface .....	Page 2
	Company history / Support / Internet .....	Page 4
	Applications .....	Page 6
	<b>Modular Waveform Digitizers</b>	
	M4i.22xx PCIe x8 5 GS/s 8 Bit .....	Page 9
	M4i.44xx PCIe x8 500 MS/s 14/16 Bit .....	Page 9
	M3i.21xx PCIe/PCI 1 GS/s 8 Bit .....	Page 10
	M3i.48xx PCIe/PCI 180 MS/s 16 Bit .....	Page 10
	M3i.41xx PCIe/PCI 400 MS/s 14 Bit .....	Page 10
	M2i.20xx PCIe/PCI 200 MS/s 8 Bit .....	Page 11
	M2i.49xx PCIe/PCI 60 MS/s 16 Bit .....	Page 11
	M2i.46xx PCIe/PCI 3 MS/s 16 Bit .....	Page 11
	M2i.47xx PCIe/PCI 1 MS/s .....	Page 12
	<b>Modular Waveform Digitizers / Industrial Bus</b>	
	M4x.22xx PXIe x4 5 GS/s 8 Bit .....	Page 12
	M4x.44xx PXIe x4 500 MS/s 14/16 Bit .....	Page 12
	MX.20xx PXI 200 MS/s 8 Bit .....	Page 13
	MX.49xx PXI 60 MS/s 16 Bit .....	Page 13
	MX.46xx PXI 3 MS/s 16 Bit .....	Page 13
	MX.47xx PXI 500 kS/s 16 Bit .....	Page 13
	<b>Ethernet / LXI Digitizer</b>	
	DN2.22x/DN6.22x LXI 5 GS/s 8 Bit .....	Page 14
	DN2.44x/DN6.44x LXI 500 MS/s 14 Bit .....	Page 14
	DN2.49x/DN6.49x LXI 60 MS/s 16 Bit .....	Page 15
	DN2.46x/DN6.46x LXI 3 MS/s 16 Bit .....	Page 15
	Digitizer Features and Modes .....	Page 16
	Digitizer Accessories .....	Page 17
	<b>Modular Arbitrary Waveform Generators</b>	
	Operating Modes .....	Page 18
	M4i.66xx PCIe x8 1.25 GS/s 16 Bit .....	Page 19
	M4x.66xx PXIe x4 1.25 GS/s 16 Bit .....	Page 19
	M2i.60xx PCIe/PCI 125 MS/s 14 Bit .....	Page 20
	MX.60xx PXI 125 MS/s 14 Bit .....	Page 20
	<b>Ethernet / LXI AWG Products</b>	
	DN2.66x LXI 1.25 GS/s 16 Bit .....	Page 21
	DN2.60x LXI 125 MS/s 14 Bit .....	Page 21
	<b>Digital Waveform Acquisition Cards / Pattern Generators</b>	
	M4i.77xx PCIe x8 720 MS/s Digital Data Acquisition .....	Page 22
	M2i.70xx PCIe/PCI 125 MS/s Digital I/O Card .....	Page 23
	MX.70xx PXI 125 MS/s Digital I/O Card .....	Page 23
	Product Overview .....	Page 24
	Streaming Systems .....	Page 25
	Software .....	Page 26
	Control Center .....	Page 28
	SBench 6 .....	Page 29



## FREE DIGITIZER HANDBOOK

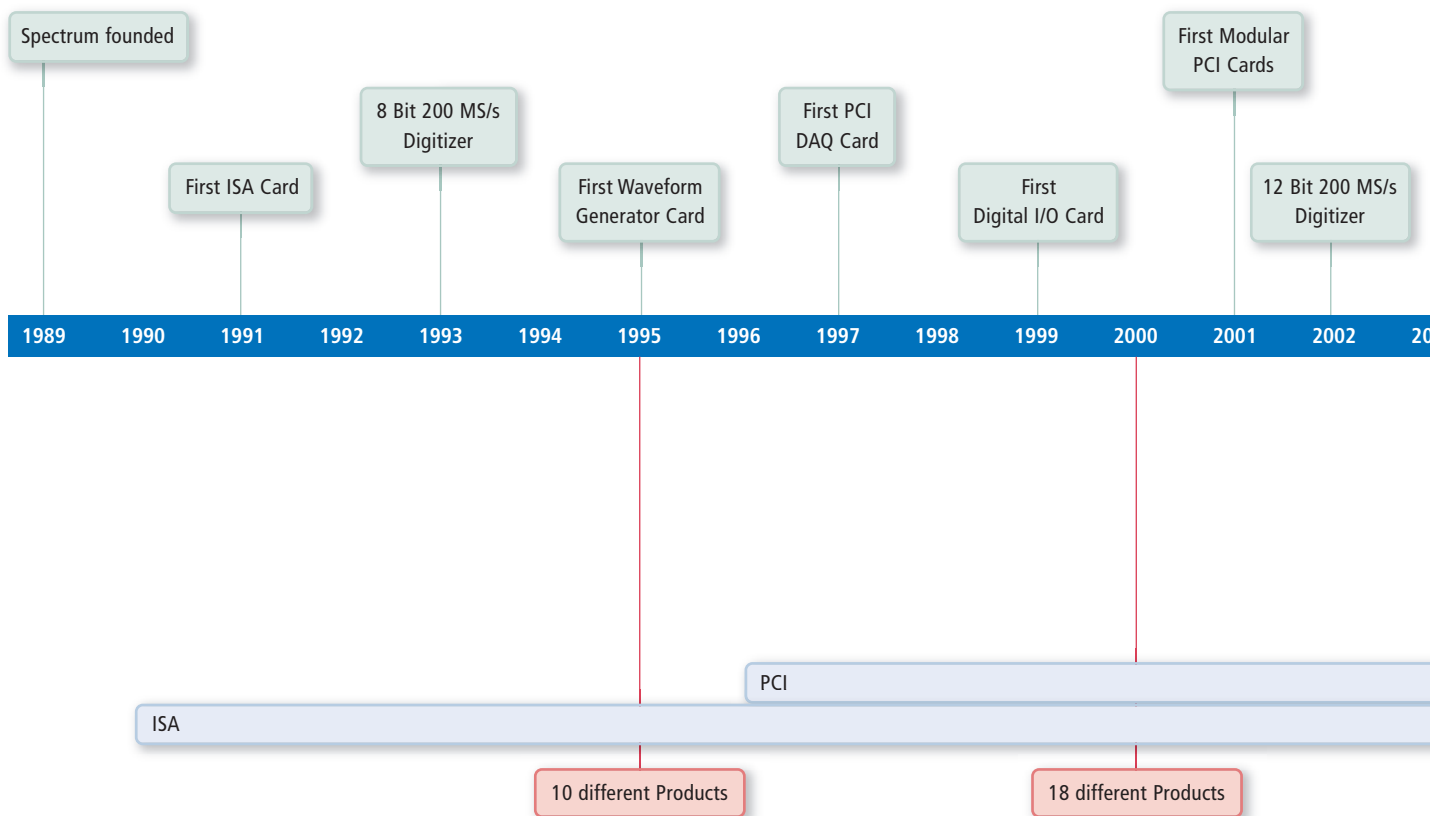
To keep engineers and scientists up to date with the latest developments in PC based digitizer technology Spectrum has published a handbook that covers the major product features of this powerful class of instrument and also explains when a digitizer can replace an oscilloscope. The 120 page booklet is printed in full color and includes a number of graphical images that highlight and explain key digitizer concepts and their application.



Request your free copy of the Digitizer Handbook directly at Spectrum



## History





## Internet Search

All Spectrum products are listed in a parametric database on our website. Just select the details of interest and all the available products are shown with their key specifications, data sheets, manuals, drivers and software. All the relevant documentation is available for immediate download:

Platform:	Analog-In:	Resolution:	Samplerate:	Input Type:	Product Status:
<input checked="" type="checkbox"/> PCI Express	<input type="checkbox"/> 1 Channel	<input type="checkbox"/> 8 Bit	<input checked="" type="checkbox"/> 1 KS/s - 1 MS/s	<input checked="" type="checkbox"/> Single Ended	<input checked="" type="checkbox"/> Active
<input type="checkbox"/> PCI Express x1	<input type="checkbox"/> 2 Channel	<input type="checkbox"/> 12 Bit	<input checked="" type="checkbox"/> 1 MS/s - 10 MS/s	<input checked="" type="checkbox"/> Differential	<input type="checkbox"/> Preliminary
<input checked="" type="checkbox"/> PCI Express x8	<input checked="" type="checkbox"/> 4 Channel	<input checked="" type="checkbox"/> 14 Bit	<input checked="" type="checkbox"/> 10 MS/s - 105 MS/s		<input type="checkbox"/> Obsolete
<input type="checkbox"/> PCI / PCI-X	<input type="checkbox"/> 8 Channel	<input type="checkbox"/> 16 Bit	<input checked="" type="checkbox"/> 100 MS/s - 500 MS/s		<input type="checkbox"/> End-of-life
<input type="checkbox"/> PXI	<input type="checkbox"/> 16 Channel		<input checked="" type="checkbox"/> >= 500 MS/s		
<input type="checkbox"/> CompactPCI					
<input checked="" type="checkbox"/> Ethernet / LXI					

[Apply parameters](#) ☒ Show Input Parameters ☐ Show Memory & Options



Product	Platform	Analog-In	Digital-In	Resolution	Samplerate	Bandwidth	Input Ranges	Impedance	Coupling	Input Type	User Offset	Product
 DN2.445-04	Ethernet	4	3	14 Bit	500 MS/s (4 active channels)	250 MHz	+/-200 mV to +/-10 V	50 Ohm / 1 MOhm	AC/DC	SE		DN2.445-04
 M4i.4451-x8	PCI Express x8	4	3	14 Bit	500 MS/s (4 active channels)	250 MHz	+/-200 mV to +/-10 V	50 Ohm / 1 MOhm	AC/DC	SE		M4i.4451-x8

## Social Media

Spectrum regularly releases new products, new features, application and product notes, new software and driver versions or new videos. Follow Spectrum on one of the social media platforms to stay up-to-date:



[www.linkedin.com/company/spectrum-instrumentation](http://www.linkedin.com/company/spectrum-instrumentation)



[www.twitter.com/SpecInstruments](http://www.twitter.com/SpecInstruments)

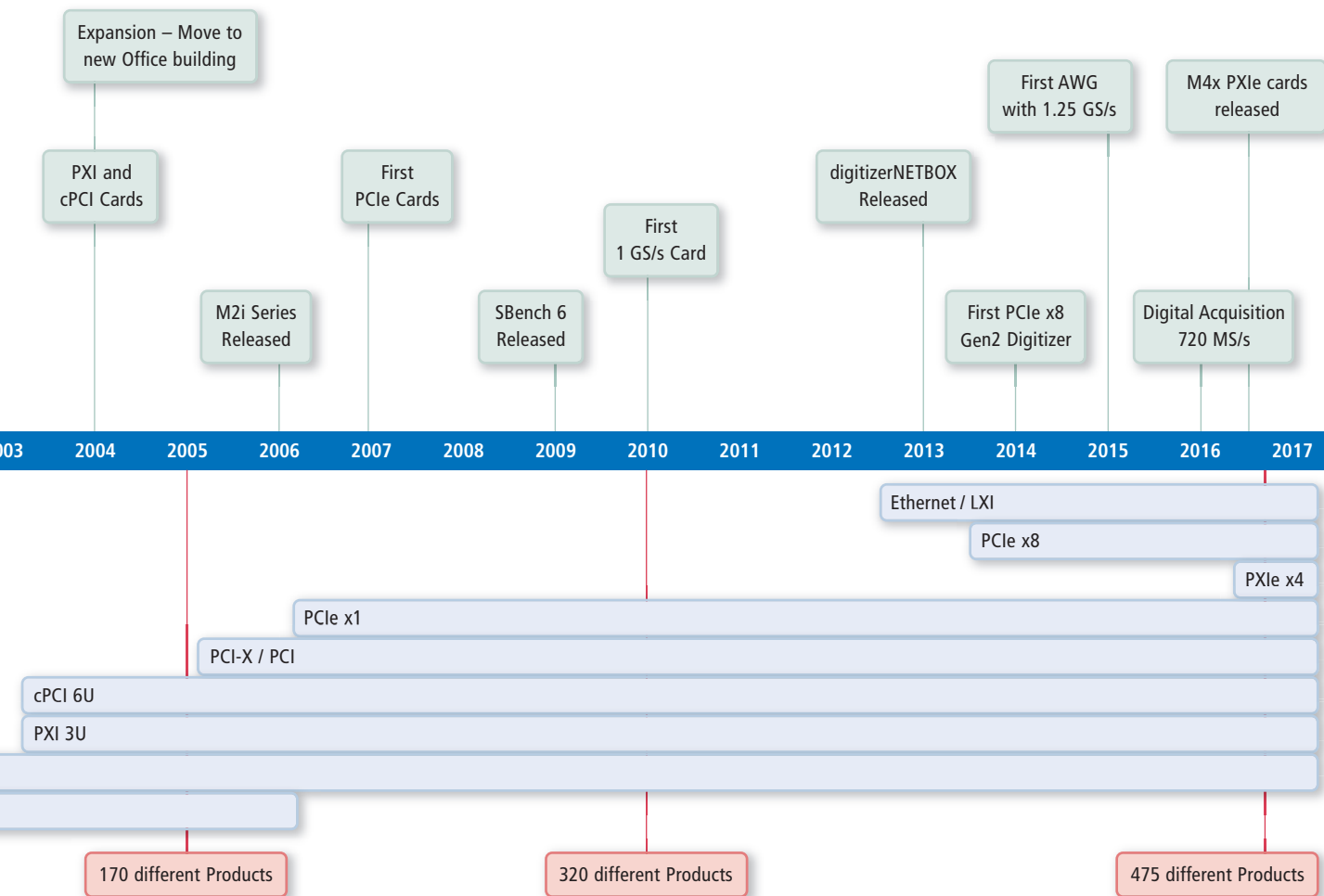


[www.facebook.com/SpectrumInstrumentation](http://www.facebook.com/SpectrumInstrumentation)



[www.youtube.com/user/SpectrumGermany](http://www.youtube.com/user/SpectrumGermany)





## Support and Warranty

Customer satisfaction is our highest priority so when you buy a Spectrum product we expect you will be pleased. All our products are designed and manufactured in Germany where we endeavor to attain the highest quality and reliability. The same philosophy applies to technical support. Our engineers are at your disposal. Need help on a software or hardware issue?

Just send us a message to [support@spec.de](mailto:support@spec.de) and our engineers will respond to you directly. You can have confidence that your message will be answered by the right specialist for the task. All the technical support from our engineers and partners is free, with no hidden charges. Spectrum products are covered by a standard warranty for two years while software and driver updates are available to download free of charge from our website for the life-time of the product.

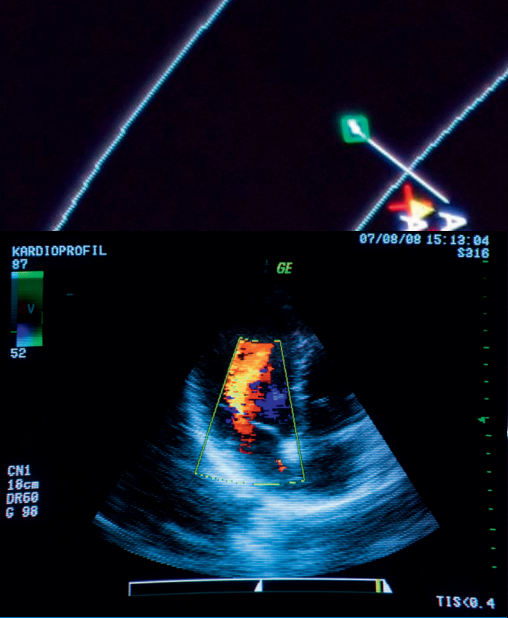
In the unusual event that a repair is necessary our service department will assist you to make it happen as quickly and efficiently as possible. We will diagnose the problem and then help you to get the repair made in the fastest and most cost effective way.

For demanding applications, Spectrum also offers an extended warranty for up to five years and a complete calibration service. Calibration is performed with fully certified instruments ensuring traceability and specification confidence. All products are manufactured and tested to meet our rigid design standards and they are shipped with the CE mark to certify that they meet all the necessary requirements of the European CE directives.

Lead-free products – we do it unsolicited. All Spectrum products are listed in category 9 "Monitoring and Control Instruments" of the RoHS directive and are therefore not forced to be lead-free. Our ambition is to produce as many lead-free products as possible. All new boards are developed with lead-free components only. Existing products are changed to lead-free as soon as all components are available in a lead-free version.

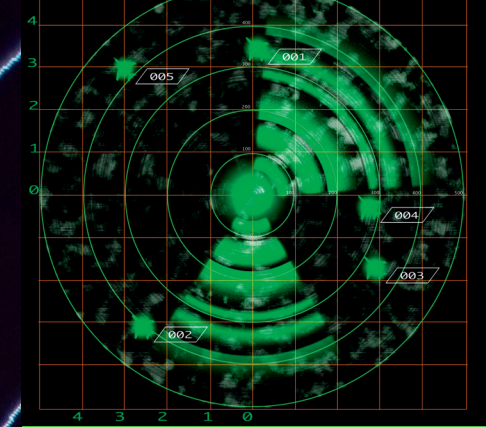






### Ultrasound

- 14 and 16 Bit Resolution
- Segmented Memory with FIFO Readout
- Low Dead-Time Between Triggers (< 80 ns)



### Radar

- 14 and 16 Bit Resolution
- Segmented Memory and FIFO Readout
- Acquisition and Generation (Continuous Radar Simulation)



### Communications

- 14 and 16 Bit Resolution
- Time and Frequency Domain Analysis
- Advanced Display Modes



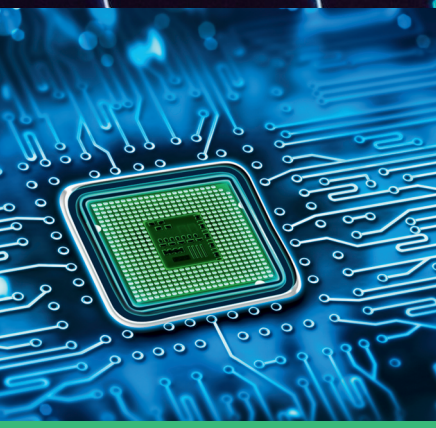
### Astronomy

- High Sampling Rates and Resolution
- Time and Frequency Domain Analysis
- Low-noise Front-end Circuitry



### Aerospace

- High Sampling Rates and Resolution
- Data Streaming and Storage
- Ultrafast Data Transfer (>3.4 GB/s)



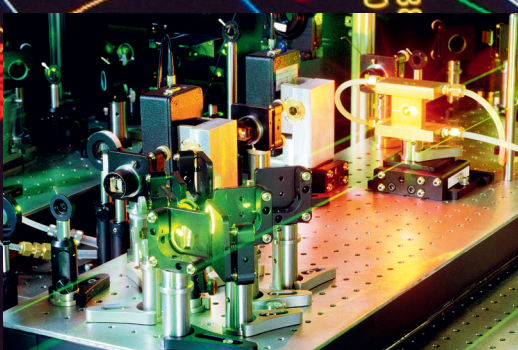
### Semiconductor Tests

- LXI, PXI and CompactPCI Modules
- Optimized SNR and SFDR
- Fully Functional Front-end Circuitry



### Acoustics

- Low Noise and High Resolution
- Very high SNR (> 90 dB) and SFDR (>105 dB)
- Hundreds of Synchronous Channels



### Laser

- 5 GS/s Sampling Rates and High Bandwidth
- Fast Trigger and Read-Out Rates
- On-Board Block Statistics (Peak Detection)



## Applications and Modular Instrumentation

One of the great benefits of modular instrumentation is how it allows you to keep pace with the ever changing developments in PC technology. Unlike most stand-alone products, modular instruments let you connect to the latest hardware, accessing today's fastest bus speeds, microprocessors and graphical tools. Furthermore, you have the flexibility to choose your own software. You can use custom specific programs, tap into extensive third party analysis products and access an extensive array of shareware utilities.

Connecting a Spectrum PC product, be it PCI Express, PXIe, PXI, LXI or CompactPCI, can transform a standard PC to a universal powerful instrument; an instrument that can be customized to match your exact application. You can start with a single card and quickly verify proof-of-concept before expanding your system as required. Spectrum provides all the software tools you may need to link in to programs like MATLAB, LabVIEW or Excel. You can have complete customization and write your own control programs or take a turn-key approach and simply run our powerful SBench 6 utility. Spectrum also provides the hardware functionality to let you best match your requirements. Products are available with 1, 2, 4, 8 and even 16 channels. Need more? Use our Star-Hub system to connect cards together and build systems with hundreds of synchronous channels!

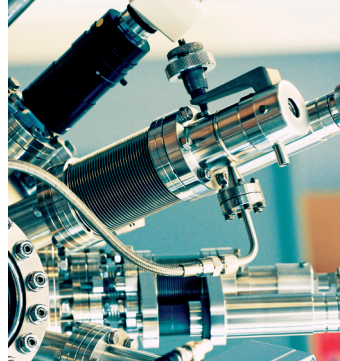
When it comes to data acquisition Spectrum offers the widest range and choice. With sampling rates from as low as 100 kS/s to as high as 5 GS/s you can capture signals from the Hz to GHz range. Models offer resolution from 8 to 16 bits and are optimized for dynamic performance to ensure the best possible accuracy and precision. Acquired signals can be stored in large on-board memories, processed using the latest FPGA technology or transferred to external storage devices using a variety of versatile readout modes.

Spectrum lets you choose the product format that best suits your needs. For example, you can select products from our PCIe family when you need the fastest data transfer speeds, or the LXI family when you require remote access or networking capabilities. PXI and PXIe modules are available so that you can even integrate Spectrum technology with hundreds of other products from a host of different vendors. Based on a modular concept, where each product consists of a main card and plug-on mezzanine boards, it's also easy for Spectrum to customize a product to better match your requirements. If you can't find the product you need in this catalog then let us know your mandatory specifications and we will be happy to investigate the possibility of making a customized product just for you!



### Big Physical Experiments

- Distributed Ethernet Acquisition
- High Channel Density with Hundreds of Synchronous Channels
- Combination of Slow and Fast Channels



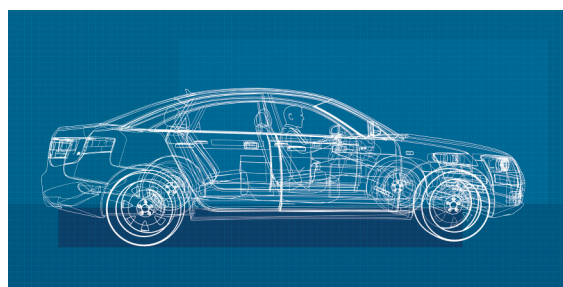
### Spectroscopy

- Ultrafast Data Transfer
- Large Acquisition Memories
- On-Board Signal Averaging



### Medical Science (OCT)

- High Sampling Rates and Resolution
- Fast Trigger and Read-Out Rates
- External Clock



### Automotive

- Acquisition and Replay of Analog and Digital Signals
- Combination of Slow and Fast Channels
- Portable (DC Supply) Systems

7



### ATE – Automatic Test Equipment

- LXI, PXIe and PXI Modules
- Acquisition and Generation
- LabVIEW, MATLAB and IVI Interface



### High Voltage Testing

- Fully Buffered Front-end Circuitry
- Single-ended and Differential Inputs
- On-Board Block Statistics (Peak Detection)

A digitizer is an electronic acquisition device that acquires analog waveforms, processes them through analog-to-digital converters (ADC's) and sends the digitized sample to a buffer, which allows them to be saved before being processed by a computer.

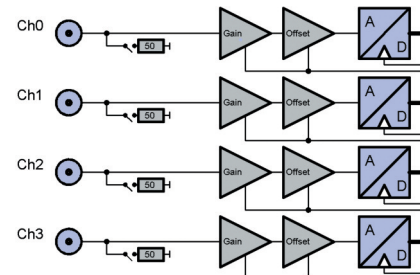
Concurrently the development of personal computers led to a number of standard computer interfaces such as PCI (Peripheral Component Interconnect) and VMEbus (VersaModular Eurocard bus) providing a standard interface to interconnect peripheral devices within a computer. These computer buses were adapted to support modular instruments by the creation of a number of modular instrument interface buses such as PXI (PCI eXtensions for Instrumentation) and VXI (VME eXtensions for Instrumentation). The increasing need to reduce test time and data though put resulted in the development of the LXI (LAN eXtensions for Instrumentation) standard for test system integration. So, all the elements for fast multichannel instrumentation systems are in place.

Today's modular digitizers share a common historical architecture augmented by new high speed serial interface standards such as PCI Express (PCIe) and PXI Express (PXIe).

## Synchronous Sampling

All digitizers from Spectrum are built with a completely synchronous design. Every channel has its own independent input amplifier as well as an independent A/D converter. All the input channel related settings can be individually programmed. Compared with standard products that use multiplex technology, where scanning of each channel is done one after the other with a single A/D converter, the more sophisticated design of the Spectrum products has a lot of advantages:

- Full sampling rate for all channels
- No phase delay between the single channels
- Smallest crosstalk between adjacent channels due to individual input amplifiers
- Direct comparison of acquired values with no need for interpolation



## Digitizer Terms

Selecting a digitizer requires matching the application needs to the digitizer specifications. The following is a glossary of common digitizer specifications and terms:

### Acquisition Memory

Digital data from the ADC's is stored in a high speed buffer memory called the acquisition memory. The depth of the digitizers acquisition memory determines the length of a signal that may be stored in the buffer before it must be transferred for processing, display or saved. Longer memory also allows for a higher sampling rate over extended record times.

### Analog-to-Digital Converter (ADC)

An analog-to-digital converter (ADC) transforms an analog signal captured by a sampler into digital data that can be processed by a computer.

### Resolution

The resolution of an ADC is specified by the number of bits used to represent the analog value, ideally giving  $2^N$  signal levels for an N-bit signal. Resolution is important for measuring large dynamic signals that contain small signal variations.

### Sampling Rate

The sampling rate, or sample rate, of a digitizer is the frequency at which analog signals are converted to digital data by the analog-to-digital converter. Effective measurement requires the sample rate of a digitizer to be least twice the frequency of the highest signal frequency. This is called the Nyquist rate. It is preferable to sample slightly higher than Nyquist.

### Bandwidth (-3 dB)

Digitizer bandwidth represents the frequency range that can go through the input without significant loss of signal amplitude. Bandwidth is typically measured as the frequency (in Hertz) where the signal amplitude falls to half the power (-3 dB) of the signal at a low frequency.

### Dynamic Range

The digitizers dynamic range determines the maximum and minimum signal voltages that can be measured in one acquisition. A large dynamic range allows for the measurement of signals that contain both small and large voltage components at the same time. Dynamic range is related to the digitizers resolution.

### Memory Segmentation

Fast, repetitive signals are stored on each trigger event as a single segment within the memory. This reduces the required transfer rate and saves memory.



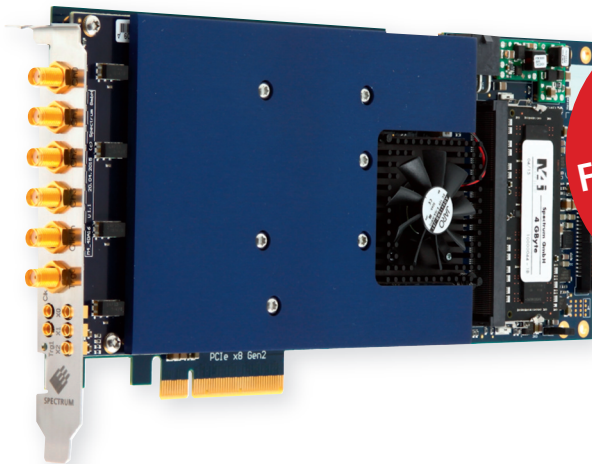


## M4i Series Highlights

- 4 GByte on-board data memory (2 GSamples for 14/16 Bit)
- High-speed continuous streaming on PCIe up to 3.4 GBytes/s
- Extended trigger modes: Level, Edge, Window, Re-Arm, OR/AND
- Internal Synchronization up to 8 cards
- Signal Processing Options for on-board data analysis:  
Block Average and Block Statistics (Peak Detect)

### ► 5 GS/s 8 Bit Digitizer

- One, two and four channel versions available
- 50 Ohm high bandwidth front-end with 4 input ranges between  $\pm 200$  mV and  $\pm 2.5$  V
- Low voltage Option:  $\pm 40$  mV to  $\pm 500$  mV



**Fastest Digitizer  
with 8 Bit  
5 GS/s**

#### Card Versions

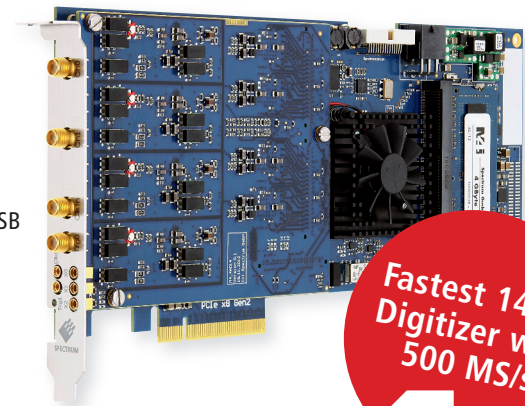
PCIe x8 Gen2	1 Channel	2 Channels	4 Channels	Bandwidth
M4i.223x-x8	5 GS/s	2.5 GS/s	1.25 GS/s	1.5 GHz
M4i.222x-x8	2.5 GS/s	2.5 GS/s		1.5 GHz
M4i.221x-x8	1.25 GS/s	1.25 GS/s	1.25 GS/s	500 MHz

### ► 500 MS/s 14/16 Bit Digitizer

- Two and four channel versions available
- 50  $\Omega$  and 1 M $\Omega$  front-end with 6 input ranges between  $\pm 200$  mV and  $\pm 10$  V
- Programmable input offset for positive unipolar 1 M $\Omega$  ranges
- High quality front-end with SNR up to 72 dB and ENOB up to 11.6 LSB

#### Card Versions

PCIe x8 Gen2	Resolution	1 Channel	2 Channels	4 Channels	Bandwidth
M4i.445x-x8	14 Bit	500 MS/s	500 MS/s	500 MS/s	250 MHz
M4i.442x-x8	16 Bit	250 MS/s	250 MS/s	250 MS/s	125 MHz
M4i.441x-x8	16 Bit	130 MS/s	130 MS/s	130 MS/s	65 MHz



**Fastest 14 Bit  
Digitizer with  
500 MS/s**

### ► Outstanding Continuous Streaming Speed

The PCI Express x8 Gen 2 interface of the PCIe cards together with the optimized firmware and kernel driver allows a sustained acquisition streaming speed to PC with more than 3 GByte/s reaching **3.4 GByte/s** on selected motherboards. The card therefore needs a physical x8 or x16 PCIe slot with Generation 2 or Generation 3 interface. The on-board memory of 4 GByte is completely used as a FIFO buffer to ensure the maximum throughput over a long time even with parallel PC activities.

This outstanding streaming speed together with the intelligent memory segmentation modes (explained on page 16) fulfills even the most demanding application needs. A gap free streaming of for example one channel 8 bit acquisition with 2.5 GS/s or four channels 14 bit acquisition 350 MS/s is easy to achieve. Using a SSD RAID 0 array with a dedicated RAID controller one can even store this amount of data continuously to disk array.



## M3i Series Highlights

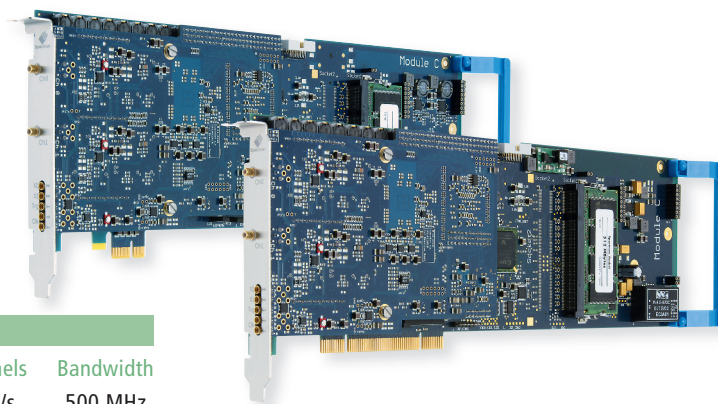
- Available as PCI Express x1 or PCI/PCI-X version
- 512 MByte (256 MSamples for 14/16 Bit) on-board memory
- Up to 2 GByte (1 GSample for 14/16 Bit)
- Internal Synchronization up to 8 cards

### 1 GS/s 8 Bit Digitizer

- One and two channel versions available
- 50  $\Omega$  and 1 M $\Omega$  front-end with 8 input ranges between  $\pm 50$  mV and  $\pm 10$  V

#### Card Versions

PCIe x1 Gen1	PCI-X/PCI 32 Bit	1 Channel	2 Channels	Bandwidth
M3i.213x-exp	M3i.213x	1 GS/s	500 MS/s	500 MHz
M3i.212x-exp	M3i.212x	500 MS/s	250 MS/s	250 MHz

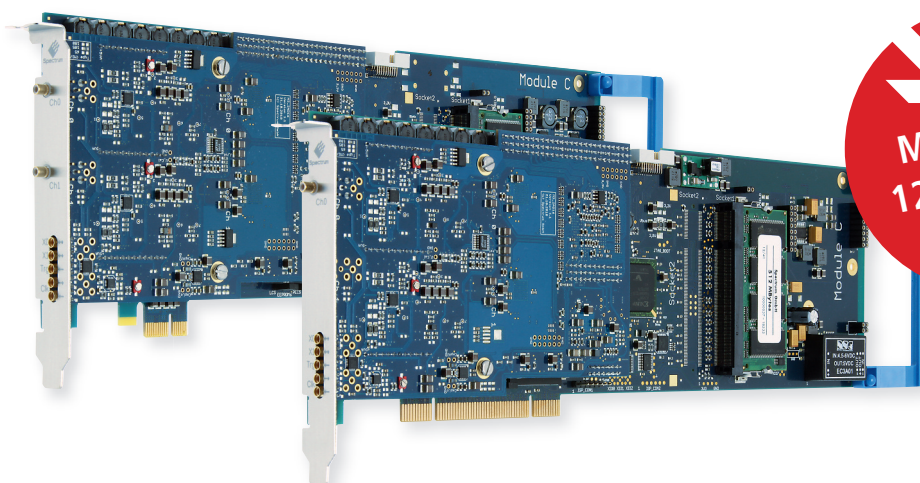


### 180 MS/s 16 Bit Digitizer

- One and two channel versions available
- Well suited for OEM projects
- 50  $\Omega$  and 1 M $\Omega$  front-end with 6 input ranges between  $\pm 200$  mV and  $\pm 10$  V

#### Card Versions

PCIe x1 Gen1	PCI-X/PCI 32 Bit	1 Channel	2 Channels	Bandwidth
M3i.486x-exp	M3i.486x	180 MS/s	180 MS/s	90 MHz
M3i.484x-exp	M3i.484x	105 MS/s	105 MS/s	50 MHz
M3i.483x-exp	M3i.483x	65 MS/s	65 MS/s	35 MHz



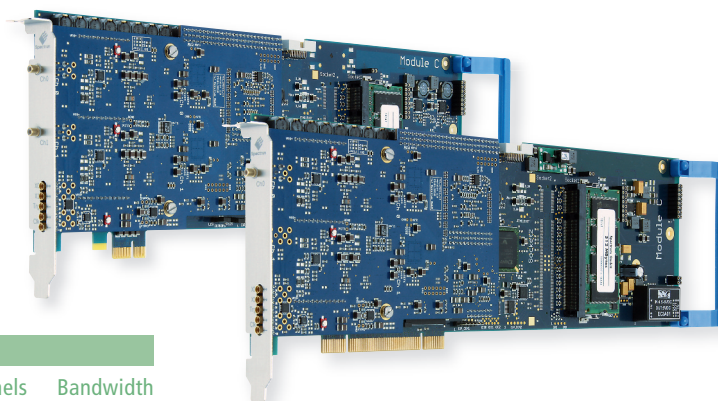
More than  
12 ENOBs at  
105 MS/s

### 400 MS/s 14 Bit Digitizer

- One and two channel versions available
- Well suited for OEM projects
- 50  $\Omega$  and 1 M $\Omega$  front-end with 6 input ranges between  $\pm 200$  mV and  $\pm 10$  V

#### Card Versions

PCIe x1 Gen1	PCI-X/PCI 32 Bit	1 Channel	2 Channels	Bandwidth
M3i.414x-exp	M3i.414x	400 MS/s	250 MS/s	200 MHz
M3i.412x-exp	M3i.412x	250 MS/s	250 MS/s	125 MHz
M3i.411x-exp	M3i.411x	100 MS/s	100 MS/s	50 MHz







## M2i Series Highlights

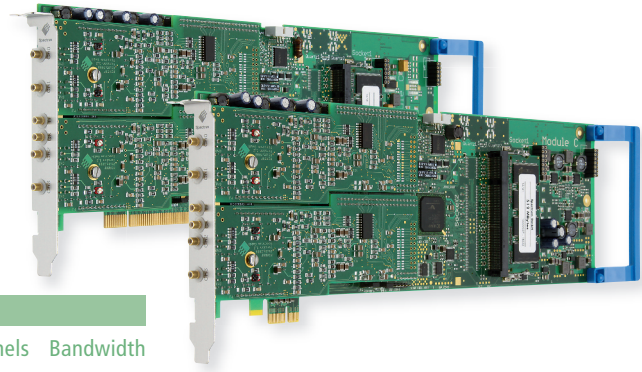
- Available as PCI Express x1 or PCI/PCI-X version
- 512 MByte (256 MSamples for 14/16 Bit) on-board memory
- Up to 2 GByte (1 GSample for 14/16 Bit) optional
- Internal Synchronization up to 16 cards mixing all M2i Series cards:  
Mixed Mode Acquisition, Stimulus Response or mixing slow and fast channels
- Additional Digital Inputs and Outputs as option

### ► 200 MS/s 8 Bit Digitizer

- Two and four channel versions available
- 50  $\Omega$  and 1 M $\Omega$  front-end with 7 input ranges between  $\pm 50$  mV and  $\pm 5$  V
- Well suited for OEM, Radar and Ultrasound applications

#### Card Versions

PCIe x1 Gen1	PCI-X/PCI 32 Bit	1 Channel	2 Channels	4 Channels	Bandwidth
M2i.203x-exp	M2i.203x	200 MS/s	200 MS/s	100 MS/s	90 MHz
M2i.202x-exp	M2i.202x	50 MS/s	50 MS/s	50 MS/s	25 MHz

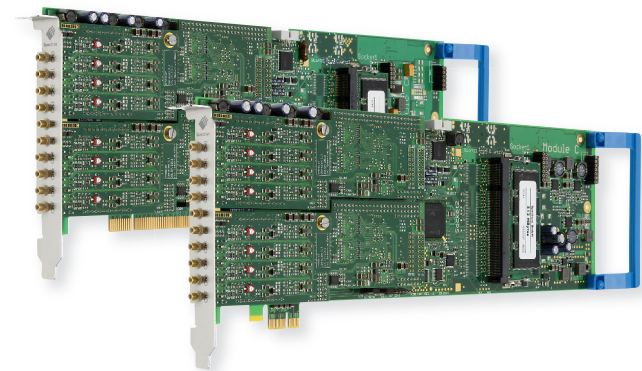


### ► 8 Channel 60 MS/s 16 Bit Digitizer

- Two, four and eight channel versions available
- Single-Ended or True Differential Inputs by software
- 50  $\Omega$  and 1 M $\Omega$  front-end with 6 input ranges between  $\pm 200$  mV and  $\pm 10$  V
- General Purpose High Quality Digitizer

#### Card Versions

PCIe x1 Gen1	PCI-X/PCI 32 Bit	1 Channel	2 Channels	4 Channels	8 Channels	Bandwidth
M2i.496x-exp	M2i.496x	60 MS/s	60 MS/s	60 MS/s	30 MS/s	30 MHz
M2i.493x-exp	M2i.493x	30 MS/s	30 MS/s	30 MS/s	30 MS/s	15 MHz
M2i.491x-exp	M2i.491x	10 MS/s	10 MS/s	10 MS/s	10 MS/s	5 MHz

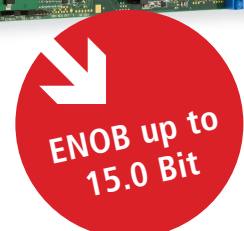
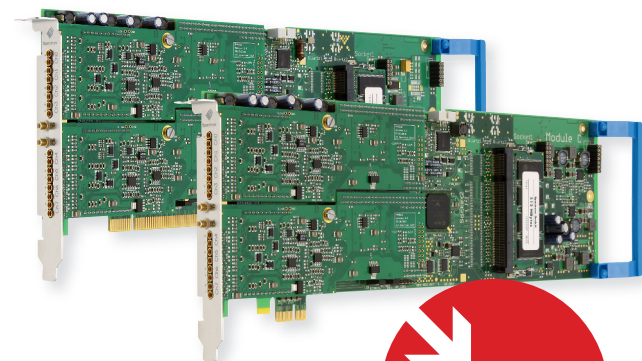


### ► 8 Channel 3 MS/s 16 Bit High-Resolution Data Acquisition

- Two, four and eight channel versions available
- Single-Ended or True Differential Inputs by software
- 1 M $\Omega$  front-end with 8 input ranges between  $\pm 50$  mV and  $\pm 10$  V
- Highest quality input stage with SNR up to 91 dB and ENOB up to 15 LSB

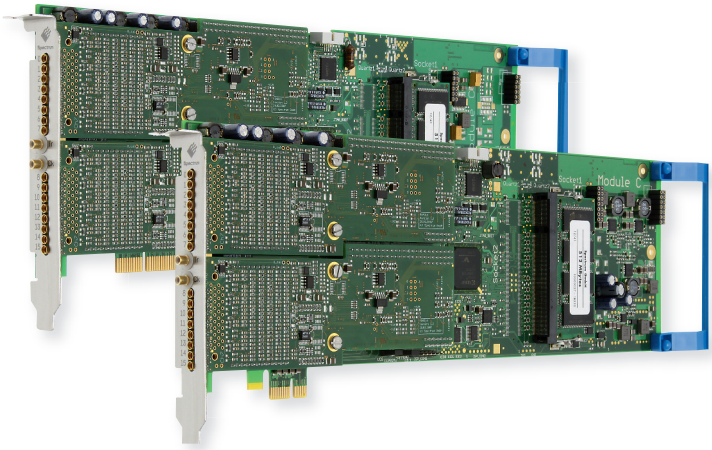
#### Card Versions

PCIe x1 Gen1	PCI-X/PCI 32 Bit	1 Channel	2 Channels	4 Channels	8 Channels	Bandwidth
M2i.465x-exp	M2i.465x	3 MS/s	3 MS/s	3 MS/s	3 MS/s	1.5 MHz
M2i.464x-exp	M2i.464x	1 MS/s	1 MS/s	1 MS/s	1 MS/s	500 kHz
M2i.463x-exp	M2i.463x	500 kS/s	500 kS/s	500 kS/s	500 kS/s	250 kHz
M2i.462x-exp	M2i.462x	200 kS/s	200 kS/s	200 kS/s	200 kS/s	100 kHz



## ▶ 16 Channel 1 MS/s 16 Bit synchronous Data Acquisition

- Eight and sixteen channel versions available
- 1 M $\Omega$  front-end with 8 input ranges between  $\pm 50$  mV and  $\pm 10$  V
- Up to 256 synchronous channels per system



### Card Versions

PCIe x1 Gen1	PCI-X/PCI 32 Bit	1 Channel	2 Channels	4 Channels	8 Channels	16 Channels	Bandwidth
M2i.474x-exp	M2i.474x	1.33 MS/s	1.33 MS/s	1.33 MS/s	1.33 MS/s	1.33 MS/s	500 kHz
M2i.473x-exp	M2i.473x	500 kS/s	500 kS/s	500 kS/s	500 kS/s	500 kS/s	250 kHz
M2i.472x-exp	M2i.472x	250 kS/s	250 kS/s	250 kS/s	250 kS/s	250 kS/s	125 kHz
M2i.471x-exp	M2i.471x	100 kS/s	100 kS/s	100 kS/s	100 kS/s	100 kS/s	50 kHz



## M4x Series Highlights

- 4 lane PXIe Gen2 interface with full streaming speed up to 1.7 GByte/s
- Support of PXIe and PXI reference clock, star-trigger and trigger bus
- 4 GByte on-board data memory
- Extended trigger modes: Level, Edge, Window, Re-Arm, OR/AND
- Signal processing Options for on-board data analysis:  
Block Average and Block Statistics (Peak Detect)

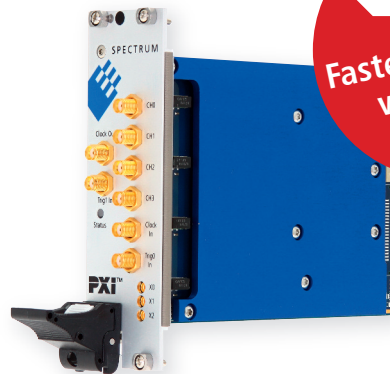


## ▶ 5 GS/s 8 Bit Digitizer

- One, two and four channel versions available
- 50 Ohm high bandwidth front-end with 4 input ranges between  $\pm 200$  mV and  $\pm 2.5$  V
- Low voltage Option:  $\pm 40$  mV to  $\pm 500$  mV

### Card Versions

PXIe x4 Gen2	1 Channel	2 Channels	4 Channels	Bandwidth
M4x.223x-x4	5 GS/s	2.5 GS/s	1.25 GS/s	1.5 GHz
M4x.222x-x4	2.5 GS/s	2.5 GS/s		1.5 GHz
M4x.221x-x4	1.25 GS/s	1.25 GS/s	1.25 GS/s	500 MHz



Fastest Digitizer  
with 8 Bit  
5 GS/s

## ▶ 500 MS/s 14/16 Bit Digitizer

- Two and four channel versions available
- 50  $\Omega$  and 1 M $\Omega$  front-end with 6 input ranges between  $\pm 200$  mV and  $\pm 10$  V
- Programmable input offset for positive unipolar 1 M $\Omega$  ranges
- High quality front-end with SNR up to 72 dB and ENOB up to 11.6 LSB

### Card Versions

PXIe x4 Gen2	Resolution	1 Channel	2 Channels	4 Channels	Bandwidth
M4x.445x-x4	14 Bit	500 MS/s	500 MS/s	500 MS/s	250 MHz
M4x.442x-x4	16 Bit	250 MS/s	250 MS/s	250 MS/s	125 MHz
M4x.441x-x4	16 Bit	130 MS/s	130 MS/s	130 MS/s	65 MHz



Fastest 14 Bit  
Digitizer with  
500 MS/s





## MX Series Highlights

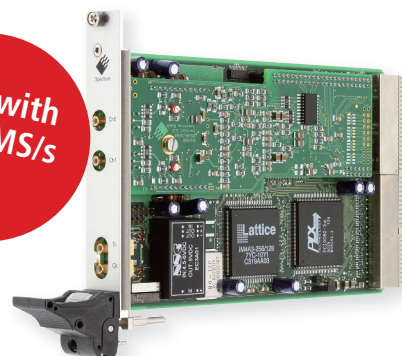
- Available as PXI 3U
- Support of PXI Star-Trigger, Reference Clock and Trigger Bus

### 200 MS/s 8 Bit Digitizer

- Two channel versions available
- 50  $\Omega$  and 1 M $\Omega$  front-end with 7 input ranges between  $\pm 50$  mV and  $\pm 5$  V
- Well suited for OEM, Radar and Ultrasound applications

#### Card Versions

PXI 3U	1 Channel	2 Channels	Bandwidth
MX.203x	200 MS/s	100 MS/s	90 MHz
MX.202x	50 MS/s	50 MS/s	25 MHz

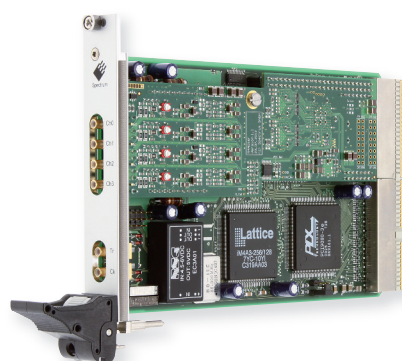


### 4 Channel 50 MS/s 16 Bit Digitizer

- Two and four channel versions available
- Single-Ended or True Differential Inputs by software
- 50  $\Omega$  and 1 M $\Omega$  front-end with 6 input ranges between  $\pm 200$  mV and  $\pm 10$  V
- General Purpose High Quality Digitizer

#### Card Versions

PXI 3U	1 Channel	2 Channels	4 Channels	Bandwidth
MX.496x	50 MS/s	50 MS/s	25 MS/s	30 MHz
MX.493x	25 MS/s	25 MS/s	25 MS/s	15 MHz
MX.491x	10 MS/s	10 MS/s	10 MS/s	5 MHz



### 4 Channel 3 MS/s 16 Bit High-Resolution Data Acquisition

- Two and four channel versions available
- Single-Ended or True Differential Inputs by software
- 1 M $\Omega$  front-end with 8 input ranges between  $\pm 50$  mV and  $\pm 10$  V
- Highest quality input stage with SNR up to 91 dB and ENOB up to 15 LSB

#### Card Versions

PXI 3U	1 Channel	2 Channels	4 Channels	Bandwidth
MX.465x	3 MS/s	3 MS/s	3 MS/s	1.5 MHz
MX.464x	1 MS/s	1 MS/s	1 MS/s	500 kHz
MX.463x	500 kS/s	500 kS/s	500 kS/s	250 kHz
MX.462x	200 kS/s	200 kS/s	200 kS/s	100 kHz

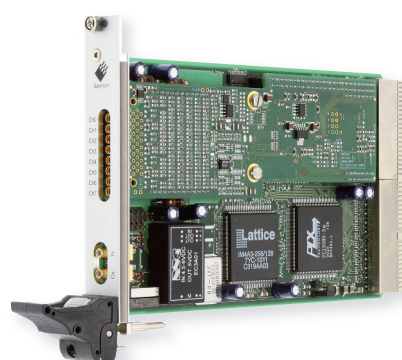


### 8 Channel 500 kS/s 16 Bit synchronous Data Acquisition

- Eight channel versions available
- 1 M $\Omega$  front-end with 8 input ranges between  $\pm 50$  mV and  $\pm 10$  V

#### Card Versions

PXI 3U	1 Channel	2 Channels	4 Channels	8 Channels	Bandwidth
MX.473x	500 kS/s	500 kS/s	500 kS/s	500 kS/s	250 kHz
MX.472x	250 kS/s	250 kS/s	250 kS/s	250 kS/s	125 kHz
MX.471x	100 kS/s	100 kS/s	100 kS/s	100 kS/s	50 kHz



digitizer**NETBOX** Series Highlights

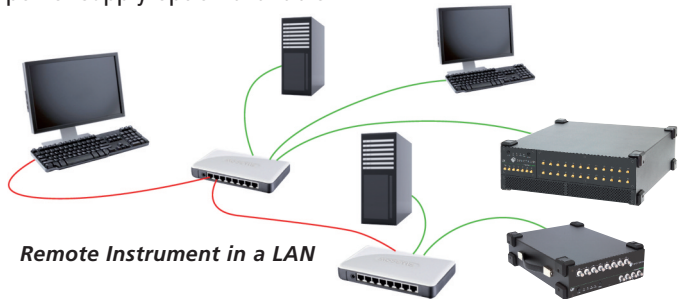
- Complete portable instrument solution
- Connect directly to your PC or Laptop or anywhere in the company LAN
- BNC (< 100 MS/s) or SMA (> 100 MS/s) connectors
- SBench 6 Professional software license included
- 19" and DC power supply option available



Mobile or service



Shared instrument on desktop



Remote Instrument in a LAN

## ► 5 GS/s 8 Bit Digitizer

- Two to 24 channel versions available
- All channels run synchronously with full sampling speed
- 50 Ohm high bandwidth front-end with 4 input ranges between  $\pm 200$  mV and  $\pm 2.5$  V
- Low voltage option:  $\pm 40$  mV to  $\pm 500$  mV



DN2.22x-02



DN6.22x-24

8 Bit Digitizer  
with up to  
6 x 5 GS/s

## Versions

Speed	Bandwidth	2 Channels	4 Channels	8 Channels	12 Channels	16 Channels	20 Channels	24 Channels
5 GS/s	1.5 GHz	DN2.223-02	DN2.225-04	DN2.225-08	DN6.225-12	DN6.225-16	DN6.225-20	DN6.225-24
2.5 GS/s	1.5 GHz	DN2.222-02	DN2.222-04					
1.25 GS/s	500 MHz	DN2.221-02	DN2.221-04	DN2.221-08	DN6.221-12	DN6.221-16	DN6.221-20	DN6.221-24

## ► 500 MS/s 14/16 Bit Digitizer

- Two to 24 channel versions available
- All channels run synchronously with full sampling speed
- 50  $\Omega$  and 1 M $\Omega$  front-end with 6 input ranges between  $\pm 200$  mV and  $\pm 10$  V
- Programmable input offset for positive unipolar 1 M $\Omega$  ranges
- High quality front-end with SNR up to 72 dB and ENOB up to 11.6 LSB



DN6.44x-24



DN2.44x-08

DN2.44x-04

## Versions

Speed	Resolution	Bandwidth	2 Channels	4 Channels	8 Channels	12 Channels	16 Channels	20 Channels	24 Channels
500 MS/s	14 Bit	250 MHz	DN2.445-02	DN2.445-04	DN2.445-08	DN6.445-12	DN6.445-16	DN6.445-20	DN6.445-24
250 MS/s	16 Bit	125 MHz	DN2.442-02	DN2.442-04	DN2.442-08	DN6.442-12	DN6.442-16	DN6.442-20	DN6.442-24
130 MS/s	16 Bit	65 MHz	DN2.441-02	DN2.441-04	DN2.441-08	DN6.441-12	DN6.441-16	DN6.441-20	DN6.441-24



## ► 60 MS/s 16 Bit General Purpose Digitizer

- Four up to 48 channel versions available
- Single-Ended or True Differential Inputs by software
- 50  $\Omega$  and 1 M $\Omega$  front-end with 6 input ranges between  $\pm 200$  mV and  $\pm 10$  V



DN6.49x-40



DN2.49x-08

DN2.49x-16

Single-Ended and True Differential Inputs

### Versions

Speed	Bandwidth	4 Channels	8 Channels	16 Channels	24 Channels	32 Channels	40 Channels	48 Channels
60 MS/s	30 MHz	DN2.496-04	DN2.496-08	DN2.496-16	DN6.496-24	DN6.496-32	DN6.496-40	DN6.496-48
10 MS/s	5 MHz	DN2.491-04	DN2.491-08	DN2.491-16	DN6.491-24	DN6.491-32	DN6.491-40	DN6.491-48

## ► 3 MS/s 16 Bit High-Resolution Data Acquisition

- Four up to 48 channel versions available
- Single-Ended or True Differential Inputs by software
- 1 M $\Omega$  front-end with 8 input ranges between  $\pm 50$  mV and  $\pm 10$  V
- Highest quality input stage with SNR up to 91 dB and ENOB up to 15 LSB



DN2.46x-04

DN2.46x-08

### Versions

Speed	Bandwidth	4 Channels	8 Channels	16 Channels	16 Channels	24 Channels	32 Channels	40 Channels	48 Channels
		4 x Single 4 x Diff	8 x Single 8 x Diff	16 x Single	16 x Single 16 x Diff	24 x Single 24 x Diff	32 x Single	40 x Single	48 x Single
3 MS/s	1.5 MHz	DN2.465-04	DN2.465-08	DN2.465-16	DN6.465-16	DN6.465-24	DN6.465-32	DN6.465-40	DN6.465-48
1 MS/s	500 kHz	DN2.464-04	DN2.464-08	DN2.464-16	DN6.464-16	DN6.464-24	DN6.464-32	DN6.464-40	DN6.464-48
200 kS/s	100 kHz	DN2.462-04	DN2.462-08	DN2.462-16	DN6.462-16	DN6.462-24	DN6.462-32	DN6.462-40	DN6.462-48

## ► Embedded Server Option

The option turns the digitizerNETBOX into a powerful PC that can run your own programs on a small and remote data acquisition system. The digitizerNETBOX is enhanced by more memory, a powerful CPU, a freely accessible internal SSD and a remote software development access method.

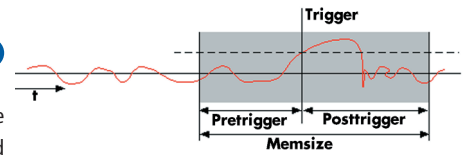
The digitizerNETBOX can either run connected to a LAN or it can run totally independently, storing data to the internal SSD. The original digitizerNETBOX remote instrument functionality is fully maintained but running the embedded server option allows the pre-calculation of results inside the unit. Then you can choose to transfer just the information (data or calculated results) that's required in a client-server based software structure. The digitizerNETBOX embedded server option is ideal for surveillance/logger applications, which can run totally independently for days. When necessary, it can send notification emails or alerts over the LAN, or offload stored data as soon as it's connected again.





## Transient Capture / Ring Buffer Mode

The standard mode of the digitizer is the ring buffer mode. In this mode data is written into the buffer until a trigger event occurs. After the event additional posttrigger values are recorded enabling both pre- and posttrigger data to be acquired. It is also possible to read the acquired data directly after the trigger event, even while the acquisition is still running.



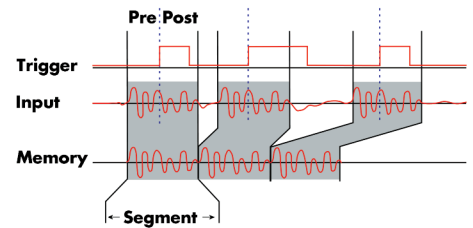
## FIFO Mode

The FIFO mode is designed for continuous data transfer between the digitizer/generator and the PC memory or hard disk. It uses the complete on-board memory as a real FIFO buffer, making the transfer extremely reliable. Data is transferred over the bus by the driver without the need for the user to make any special setup. All Spectrum products are designed to reach maximum continuous transfer speed which can reach up to 3.4 GByte/s on a PCIe x8 Gen2 interface.



## Multiple Recording

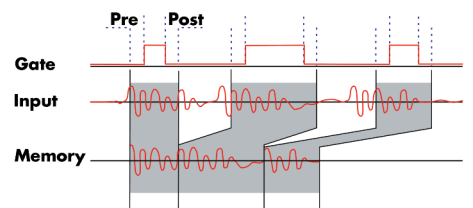
Multiple recording allows the acquisition of several trigger events without restarting the hardware. The on-board memory is split into segments and for each trigger event one segment is recorded. The segment size and the pre- and posttrigger settings can be freely defined. The powerful combination of a small re-arming time and FIFO mode makes it easy to adapt to nearly every measurement task.



## Gated Sampling (MX, M2i, M4x, M4i, digitizerNETBOX only)

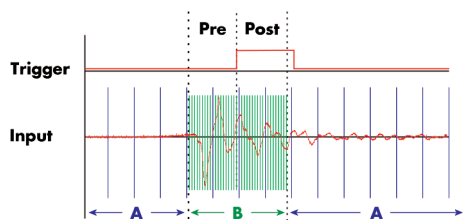
With Gated Sampling the acquisition is controlled by an external gate signal. Data is only acquired if the gate signal has reached a programmed level. Before and after each gate a programmable number of samples will be acquired.

Gated Sampling can be combined with timestamps for time-correct positioning of the gate segments and to determine the length of each acquired gate segment.



## ABA Mode / Dual Timebase (M2i, M3i, M4i, M4x, digitizerNETBOX only)

The ABA mode is similar to Multiple Recording. However, between the segments additional samples are acquired with a slower sampling rate, e.g. for monitoring purposes. The ABA mode works like the combination of a data logger and transient recorder inside one instrument.

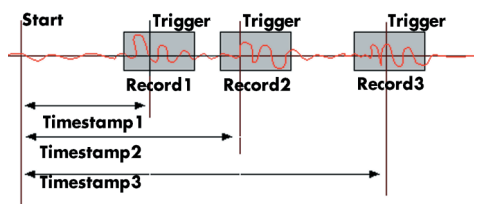


## Timestamp

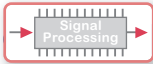
The Timestamp mode writes the time positions of the trigger events into an extra memory. The Timestamps are relative to the start of recording, to a defined zero time or externally synchronized to the seconds signal from a radio clock or a GPS receiver. With this mode acquisitions of systems in different locations may be set in a precise time relation. The Timestamp mode was developed as a useful extension to the Multiple Recording and Gated Sampling mode but can also be used with other acquisition modes when trigger time stamping is needed.

The Timestamp memory is designed as a FIFO buffer allowing the readout of Timestamps also in FIFO mode.

The reference signal for synchronization with a radio clock or a GPS receiver is connected using an additional special connector which is standard on digitizerNETBOX products and has to be requested separately for all card level products.





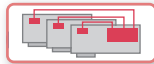


## Integrated Signal Processing (M4i, M4x, digitizerNETBOX only)

All digitizers of 44xx and 22xx series including PCIe, digitizerNETBOX and PXIe versions can be extended by integrated signal processing functions.

The Block Average Processing Module allows the accumulation and averaging of multiple repetitive signals. The function removes random noise from the signal, improving the signal-to-noise ratio and measurement resolution. Ultrafast triggering also ensures the dead-time between each acquisition is kept to a minimum.

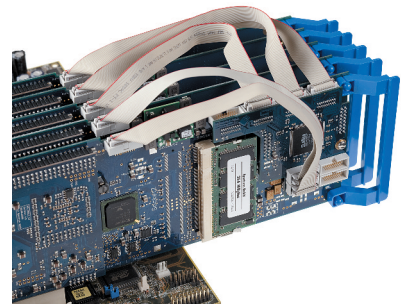
The Block Statistics Processing Module is a hardware based data analysis and reduction function. Each acquisition block is scanned for minimum and maximum peaks and a summary including min, max, average, timestamps and peak position information is stored in memory.



## Option Star-Hub

The Star-Hub is an additional module allowing the phase stable synchronization of up to 16 boards (M2i series) or up to 8 boards (M3i/M4i series). Independent of the number of boards there is no phase delay between all channels. As a result all connected boards are running with the same clock and the same trigger. Each board is internally connected with a small cable of the same length, even the master board. That minimizes the clock skew between the different boards.

On the M2i series the Star-Hub allows the synchronization of various cards when running with different sampling rates. This allows a mix of slow and fast sampling in one system whilst still preserving the phase relation between the different channels.



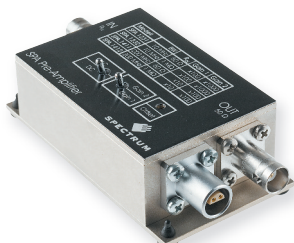
## Accessoires



## Adapter Cables

Matching the variety of different signal and auxiliary connections Spectrum is offering a complete range of adapter cables using proven industrial shielded connections. Supported connections are SMA, BNC, SMB and MMCX, all in male and female style.

For high-speed digitizers with signal frequencies way above 100 MHz, special low loss adapter cables are available.



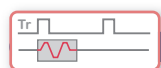
## External Amplifiers

Independent external pre-amplifiers allow to acquire extremely small signals down into the low  $\mu\text{V}$  range with a reasonable quality. The external amplifiers are optimized for low noise inputs. The amplifiers of the SPA series are available with different bandwidth and input impedance options. No programming is needed to operate these amplifiers.

Electronic test and measurements equipment can be classified into two major categories; measurement instruments and signal sources. Instruments such as digital multi-meters, digitizers, oscilloscopes, spectrum analyzers, and logic analyzers measure electrical characteristics of an input signal, most typically electrical potential difference or voltage. Signal sources, such as Arbitrary Waveform Generators (AWG's), are required to provide signals to be used as a test stimulus. In many test situations the devices being tested do not generate signals on their own.

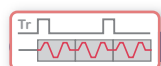
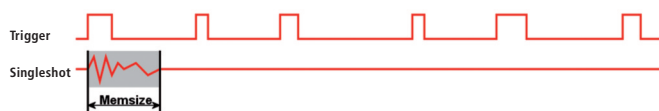
## Operating Modes

AWG's may incorporate multiple operating modes which determine how the stored waveforms are replayed. The ability to repeat (loop) selected segments of the waveform and advance between segments based on triggers or gating signals provides the ultimate flexibility and reduces the amount of memory required for complex waveforms. Here is a summary of common operating modes:



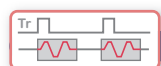
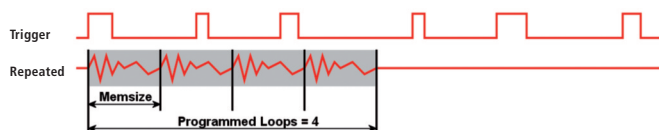
### Singleshot

The programmed waveform is played once after receiving a trigger event be it external or software. After the first trigger subsequent triggers are ignored.



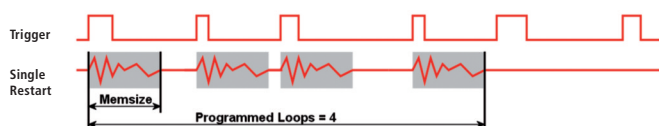
### Repeated Output

The programmed waveform is played continuously for a pre-programmed number of times or until a stop command is executed. The trigger source can be either an external trigger inputs or the software trigger. After the first trigger additional trigger events will be ignored.



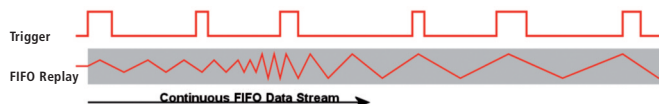
### Single Restart Replay

This mode outputs the waveform data of the on-board memory once after each trigger event. The trigger source can be either an external trigger or the internal software trigger.



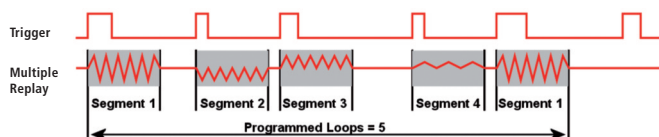
### FIFO

The FIFO mode is an operating mode unique to Spectrum's modular AWG's. It is designed for continuous data transfer between the host computers memory or hard disk and the AWG. The control of the data stream is done automatically by the driver on an interrupt request basis. The complete installed on-board memory is used for buffering data, making the continuous streaming extremely reliable.



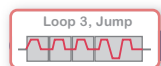
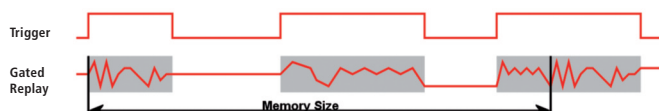
### Multiple Replay

The Multiple Replay mode provides fast output of waveforms on multiple trigger events without restarting the hardware. The on-board memory is divided into several equal size segments. Each segment can contain different waveform data, each of which is output with the occurrence of each trigger event. This mode allows very fast repetition rates.



### Gated Replay

The Gated Replay sampling mode outputs waveform data controlled by an external gate signal. Data is only replayed if the gate signal is at a pre-programmed level.



### Sequence Replay Mode

The sequence mode splits the internal card memory into a number of data segments of different lengths. These data segments are chained in a user set order using an additional sequence memory. The sequence memory determines the order that segments are output as well as the number of loops for each segment. Trigger conditions can be defined to advance from segment to segment. Using sequence mode it is possible to switch between replay waveforms by a simple software command or to redefine waveform data for segments simultaneously while other segments are being replayed.





## M4i Series Highlights

- 2 GSamples on-board data memory
- High-speed continuous streaming from PCIe up to 2.8 GByte/s
- External trigger and external clock support
- Internal synchronization up to 8 cards

### ► 1.25 GS/s 16 Bit Arbitrary Waveform Generator

- One, two and four channel versions available
- 2 GSample replay memory
- Single-Shot, Multiple Replay, Streaming (FIFO) Output, Sequence Replay Mode
- Up to  $\pm 2.5$  V into 50  $\Omega$  load
- 3 programmable and routable synchronous marker outputs



#### Card Versions

PCIe x8 Gen2	1 Channel	2 Channels	4 Channels	Bandwidth	Output into 50 $\Omega$
M4i.662x-x8	625 MS/s	625 MS/s	625 MS/s	200 MHz	$\pm 2.5$ V
M4i.663x-x8	1.25 GS/s	1.25 GS/s		400 MHz	$\pm 2.0$ V



## M4x Series Highlights

- 4 lane PXIe Gen2 interface with full streaming speed up to 1.4 GByte/s
- 2 GSamples on-board data memory
- Support of PXIe and PXI reference clock, star-trigger and trigger bus
- External trigger and external clock support

### ► 1.25 GS/s 16 Bit Arbitrary Waveform Generator

- One, two and four channel versions available
- 2 GSample replay memory
- Single-Shot, Multiple Replay, Streaming (FIFO) Output, Sequence Replay Mode
- Up to  $\pm 2.5$  V into 50  $\Omega$  load
- 3 programmable and routable synchronous marker outputs



#### Card Versions

PXIe x4 Gen2	1 Channel	2 Channels	4 Channels	Bandwidth	Output into 50 $\Omega$
M4x.662x-x4	625 MS/s	625 MS/s	625 MS/s	200 MHz	$\pm 2.5$ V
M4x.663x-x4	1.25 GS/s	1.25 GS/s		400 MHz	$\pm 2.0$ V



## M2i Series Highlights

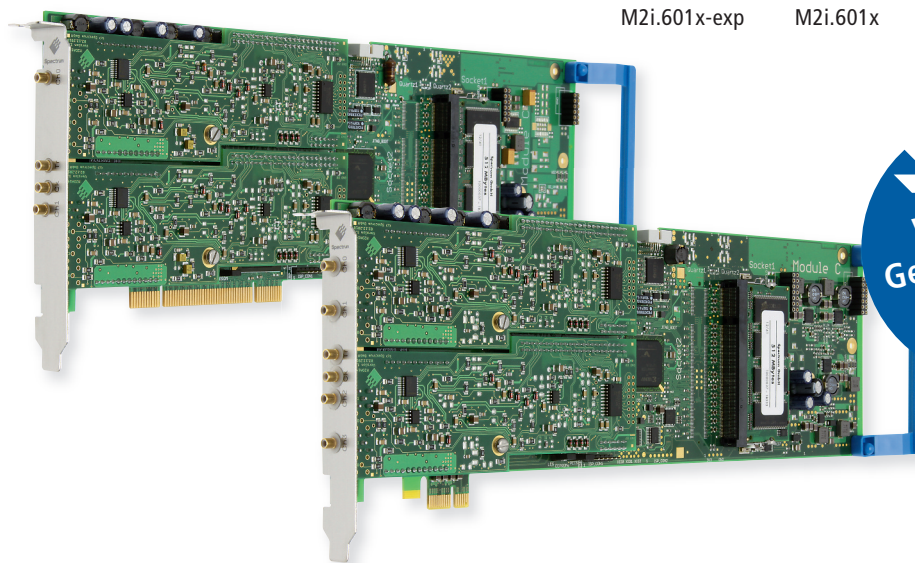
- Available as PCI Express x1 or PCI/PCI-X version
- 256 MSamples (up to 1 GSAMPLE) on-board memory
- Internal Synchronization up to 16 cards mixing all M2i Series cards
- Additional Digital Outputs (Marker channels) as option

### ▶ 125 MS/s 14 Bit Arbitrary Waveform Generator

- One, two and four channel versions available
- 256 MSample (1 GSAMPLE optional) replay memory
- $\pm 3$  V output level ( $\pm 10$  V with amplifier option)
- Single Shot, Multiple Replay, Streaming (FIFO) Output, Sequence Replay Mode

#### Card Versions

PCIe x1 Gen1	PCI-X/PCI 32 Bit	1 Channel	2 Channels	4 Channels
M2i.603x-exp	M2i.603x	125 MS/s	125 MS/s	60 MS/s
M2i.602x-exp	M2i.602x	60 MS/s	60 MS/s	60 MS/s
M2i.601x-exp	M2i.601x	20 MS/s	20 MS/s	20 MS/s



Waveform Generator with Streaming Mode

20



## MX Series Highlights

- Available as PXI 3U
- Support of PXI Star-Trigger, Reference Clock and Trigger Bus

### ▶ 125 MS/s 14 Bit Arbitrary Waveform Generator

- One and two channel versions available
- $\pm 3$  V output level ( $\pm 10$  V with amplifier option)
- Single Shot, Multiple Replay, Streaming (FIFO) Output

#### Card Versions

PXI 3U	1 Channel	2 Channels
MX.603x	125 MS/s	60 MS/s
MX.602x	60 MS/s	60 MS/s
MX.601x	20 MS/s	20 MS/s



PXI Arbitrary Waveform Generator with 2 channels



# generatorNETBOX Series Highlights

- Complete portable instrument solution
- Connect directly to your PC or Laptop or anywhere in the company LAN
- BNC (< 125 MS/s) or SMA (> 125 MS/s) connectors
- SBench 6 Professional software license included
- 19" and DC power supply options available

## ▶ 1.25 GS/s 16 Bit Arbitrary Waveform Generator

- Two, four or eight channel versions available
- Single-Shot, Multiple Replay, Streaming (FIFO) Output, Sequence Replay Mode
- Up to  $\pm 2.5$  V into 50  $\Omega$  load
- 3 programmable and routable synchronous marker outputs

### Versions

Speed	Resolution	Bandwidth	2 Channels	4 Channels	8 Channels
1.25 GS/s	16 Bit	400 MHz	DN2.663-02	DN2.663-04	
625 MS/s	16 Bit	200 MHz	DN2.662-02	DN2.662-04	DN2.662-08



## ▶ 125 MS/s 14 Bit Arbitrary Waveform Generator

- Four or eight channel versions available
- Single-Shot, Multiple Replay, Streaming (FIFO) Output, Sequence Replay Mode
- Up to  $\pm 3.0$  V into 50  $\Omega$  load



DN2.603-04

### Versions

Speed	Resolution	Bandwidth	4 Channels	8 Channels
125 MS/s	14 Bit	60 MHz	DN2.603-04	DN2.603-08

## ▶ Embedded Server Option

The option turns the generatorNETBOX into a powerful PC that can run your own programs on a small and remote data replay system. The generatorNETBOX is enhanced by more memory, a powerful CPU, a freely accessible internal SSD and a remote software development access method. The generatorNETBOX can either run connected to LAN or it can run totally independently, replaying data from the internal SSD.



The original generatorNETBOX remote instrument functionality is fully maintained but running the embedded server option allows to replay pre-calculated data from internal memory without transferring a large amount of data. The generatorNETBOX embedded server option is ideal for production or prototype testing where a large number of different waveforms have to be replayed.

Digital I/O cards, pattern or pulse generators and digital data acquisition cards are all focused on digital signals. Input and output signals have two logic levels called low state (0) and high state (1). The electrical representation of these logical levels depends on the logic family and the supported I/O standard.

- Digital Data Acquisition or Logic Analyzers acquire digital data signals by sampling it with either an internal sampling clock or an external state clock. The acquired data is stored to the on-board memory or continuously transferred to host PC using the streaming (FIFO) mode. The acquisition can be triggered by external trigger signal or by complex pattern trigger just as known from logic analyzers.
- Pattern Generators are used to generate digital electronics stimuli. The output levels can be either fixed and defined by the specification of the card or the levels can be individually programmed to a certain voltage level (for low state and high state) allowing them to be used with different external devices.
- Digital I/O Cards combine the both functions of pattern generation and digital data acquisition in one device. At Spectrum the digital I/O cards are switched between the two functions by software.
- Pulse Generators are used to generate some control pulses with defined width and distance on multiple lines. Using a standard pattern generator these pulse patterns can easily be defined by the data. The time resolution of the pulse generator then equals to the programmed output rate of the pattern generator.

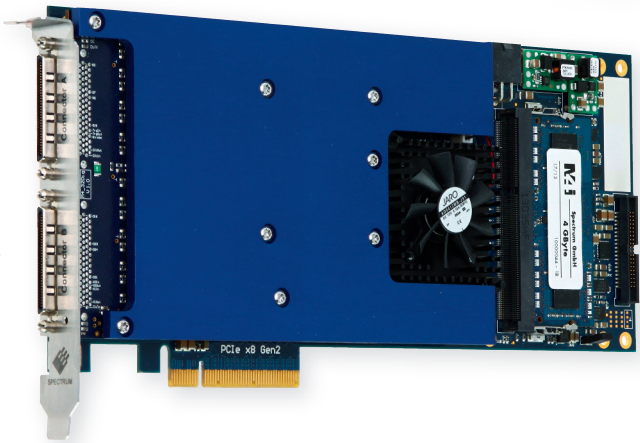


M4i Series Highlights

- 2 GSamples on-board data memory
- High-speed continuous streaming from PCIe up to 3.4 GByte/s
- External trigger and external clock support
- Internal synchronization up to 8 cards

720 MS/s Digital Data Acquisition

- 32 synchronous digital channels
- Differential version compatible to LVDS, PECL, LVPECL, ECL, NECL and others
- Single-Ended version compatible to 1.2 V, 1.5 V, 1.8 V, 2.5 V, 3.3 V and 5.0 V logic levels
- Asynchronous external state-clock up to 700 MS/s DDR with programmable clock delay
- Single-Shot, Multiple Recording, Gated Sampling, Streaming (FIFO) Acquisition



Card Versions				
PCIe x8 Gen2	LVDS	Single-Ended	SDR State Clock	DDR State Clock
M4i.771x		125 MS/s	125 MS/s	
M4i.772x	250 MS/s	250 MS/s	250 MS/s	
M4i.773x	720 MS/s	720 MS/s	350 MS/s	700 MS/s



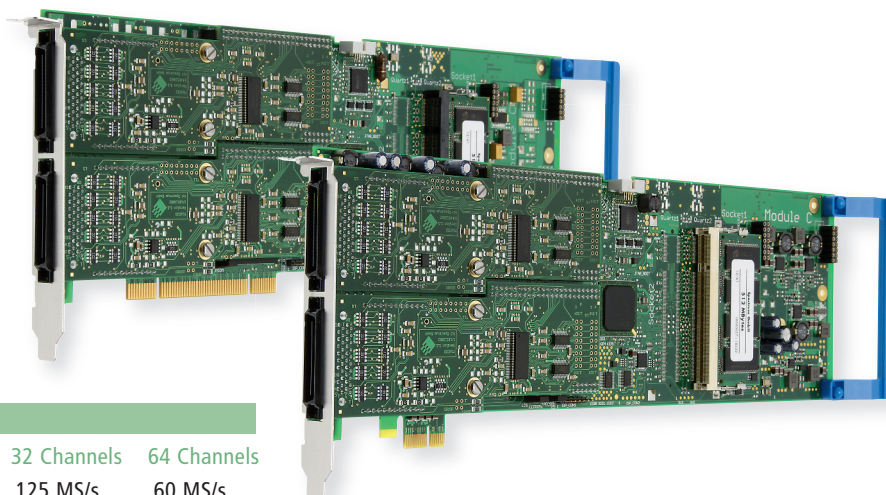


## M2i Series Highlights

- Available as PCI Express x1 or PCI/PCI-X version
- 512 MByte on-board memory
- Up to 2 GByte optional
- Internal Synchronization up to 16 cards mixing all M2i Series cards

### ▶ 125 MS/s 64 Channel Digital I/O Waveform Generation and Acquisition

- Versions with 16, 32 and 64 digital channels available
- TTL 3.3 V and 5 V compatible
- Single Shot, Multiple Recording and Replay, Streaming (FIFO) Output and Acquisition, Sequence Replay Mode



#### Card Versions

PCIe x1 Gen1	PCI-X/PCI 32 Bit	16 Channels	32 Channels	64 Channels
M2i.702x-exp	M2i.702x	125 MS/s	125 MS/s	60 MS/s
M2i.701x-exp	M2i.701x	125 MS/s	60 MS/s	

23



## MX Series Highlights

- Available as PXI 3U
- Support of PXI Star-Trigger, Reference Clock and Trigger Bus

### ▶ 125 MS/s 64 Channel Digital I/O Waveform Generation and Acquisition

- Versions with 16 and 32 digital channels available
- TTL 3.3 V and 5 V compatible
- Single Shot, Multiple Recording and Replay, Streaming (FIFO) Output and Acquisition, Sequence Replay Mode



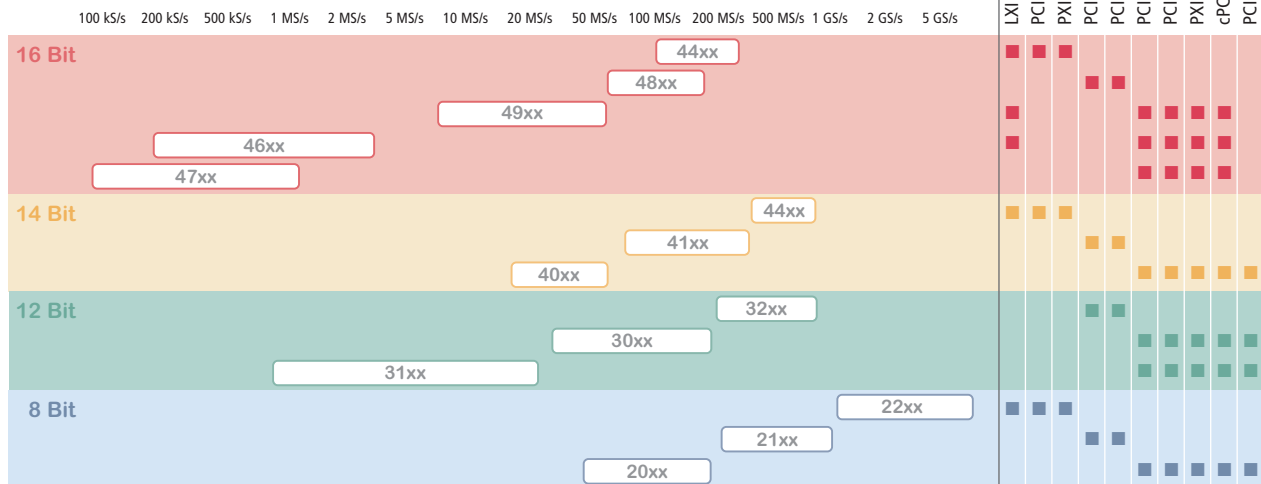
#### Card Version

PXI 3U	16 Channels	32 Channels
MX.701x	125 MS/s	60 MS/s

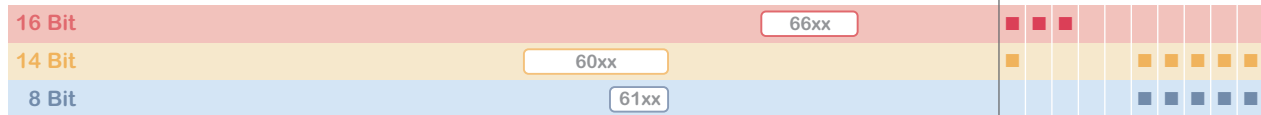
## One of Spectrum's main goals ...

... is establishing a long term business relationship with our partners and customers. We know that applications may need years until they're finalized and should run for many further years with replacement and upgrade paths available. An investment in Spectrum products won't surprise you with sudden product line strategy changes or end-of-life (or end-of-support) announcements. All products released after the year 2000 are still in full production and can be ordered in single or volume quantities:

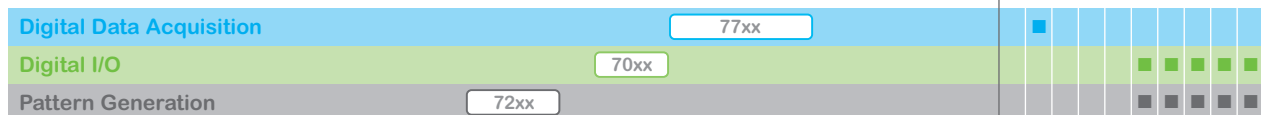
### Digitizer, Transient Recorder and A/D Products



### Arbitrary Waveform Generators



### Digital Waveform Generation and Acquisition

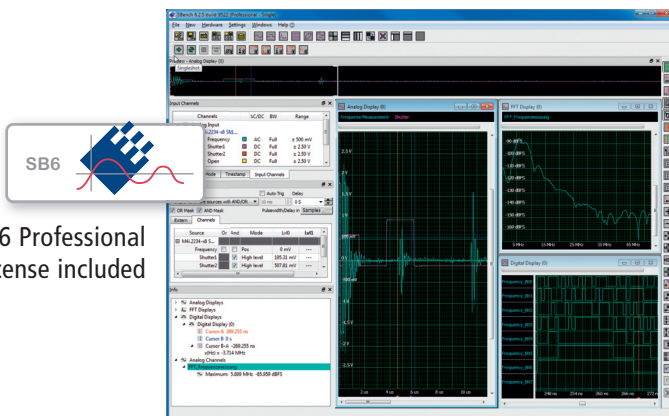




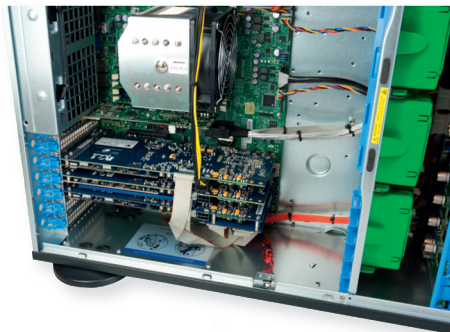
## Turn-key PC System including Software

- Continuous (seamless) Data Recording
- Guaranteed Streaming Speed up to 3 GByte/s
- Complete turn-key PC solution
- Data Storage Options from 1 to 32 Terabyte
- Single-Shot and Multiple (segmented) Acquisition Modes
- Sampling rates up to 5 GS/s (segmented) and 2.5 GS/s (single-shot)
- Configurations with 1 to 96 channels in one chassis
- Configurations up to 256 channels with docking station
- SBench6 software for easy control, display and analysis
- Factory Integrated and Performance Tested

Streaming to disk up to 3 GByte/s



SBench 6 Professional License included



Combining a number of Spectrum M2i, M3i or M4i PCIe digitizers with a Tera-Store Data Streaming solution allows the capture and storage of long complex signals for extended periods of time. With systems offering from 1 to 32 TB of storage and streaming rates up to 3 GB/s signals can be digitized and stored seamlessly for hours on end.

At the heart of the system is a carefully selected base PC system. This powerful computer includes a Supermicro 4U/Tower with 8 drive bays and 6 free PCIe slots for Spectrum cards. The PC is powered by a Xeon Quad Core 2.4 GHz processor, has on-board graphics, 8 GB RAM, a separate 256 GB SSD for the system installation, a DVD drive, and runs under Windows 7 Professional. The chassis hosts a powerful 865W power supply and has whisper quiet fan-based cooling.

If more acquisition channels are needed than can fit into the base PC system, a special 16 slot docking station can be connected to extend the number of synchronous streaming data acquisition channels up to 256.

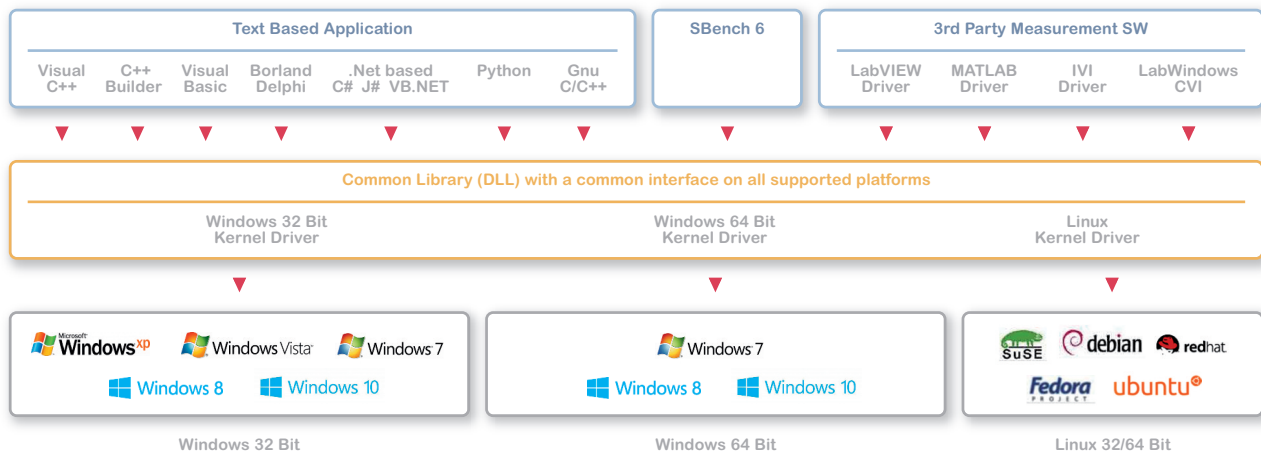
For large multi-digitizer systems Spectrum also provides the Star-Hub, a unique clock and trigger distribution system, which allows all the installed digitizer cards of one family to be clocked synchronously and to share a common trigger. The star-hub is already included in the base system.

Storage systems are available offering a range of streaming rates, from 500 MB/s up to 3 GB/s, and storage capacities, from 1 TB to 32 TB. The options consist of a high performance RAID controller and a number of solid-state or hard-disk drives (SSD/HDD's) configured to support the required transfer rates and storage times.

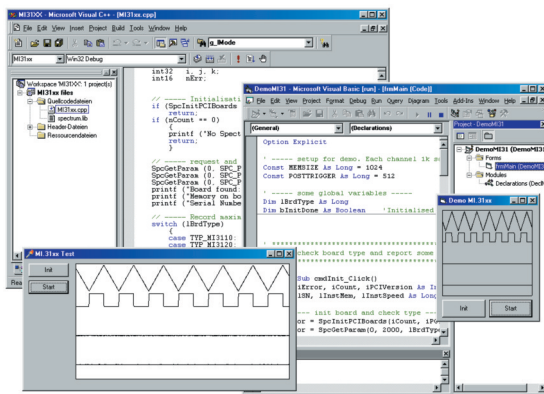
Spectrum integrates the complete system, providing factory configuration and performance testing. This includes the PC setup, software and hardware installation and digitizer calibration. Hardware and software are both optimized and tested to guarantee the specified streaming rates.

## Software

The connecting link between the user and the hardware is always the software. The wide range of software products supported by Spectrum allows the user to select the software that they want:



## ▶ Operating System Drivers



The standard driver is available for different operating systems and is programmed everywhere in the same way. This allows an easy change from one operating system to another without major changes in the source code.

The complete SDK including all drivers and examples is delivered with the hardware and updates are available from the Spectrum homepage at any time. There are **no additional SDK fees!**

The driver has a common interface for all products allowing an easy switch from one card type to another without big changes in the software. The different functionality of the products is realized with the help of board specific software registers. Programming examples are available

for different languages as seen in the above overview picture. Due to the simple interface of the driver, the integration in other programming languages or special measurement software is an easy task.

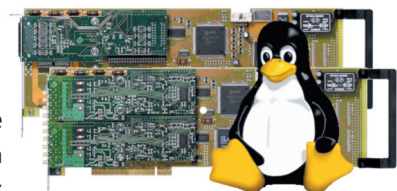
The number of examples is continuously increasing giving more detailed programming examples that allow an easy start with the Spectrum products.

## ▶ Linux Support

In many areas Linux has proven itself as a high-quality alternative to Windows. Also the instrumentation market uses more and more Linux-based systems. For many years Spectrum has provided loadable Linux kernel modules for all its products for the most common Linux distributions. We also support less common Linux versions. To make this possible the source code of the driver module and the required makefiles are available from Spectrum. The user can then compile a perfectly matching version for his Linux installation.

Linux driver delivery contains driver modules for more than 50 different Linux distribution versions, including the latest version of openSUSE, Fedora, Ubuntu and Debian, each as 32 bit and 64 bit kernel module.

Besides the Linux drivers Spectrum is giving full Linux support for all current software products. The Linux version of the Spectrum Control Center allows all card maintenance including firmware updates, calibration and test programs. Using the Linux versions of SBench 6 provides a fully functional data acquisition and streaming application under Linux. Both programs are made from the same source code as the Windows version giving Linux users full features and functions on the same level as Windows users. There's no development or porting delay between versions.



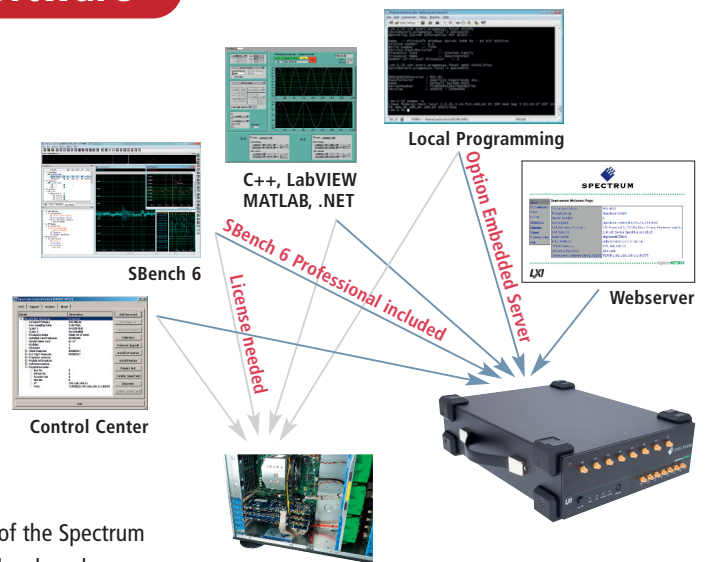


## Spectrum Remote Server

Using the Spectrum Remote Server it is possible to access the M2i/M3i/M4i/M4x card(s) installed in one PC (server) from another PC (client) via local area network (LAN), similar to using a digitizer-NETBOX. The remote server option has to be activated by software license in any of the Spectrum cards in the remote system to operate it.

It is possible to use different operating systems on both server and client. For example the Remote Server is running on a Linux system and the client is accessing them from a Windows system.

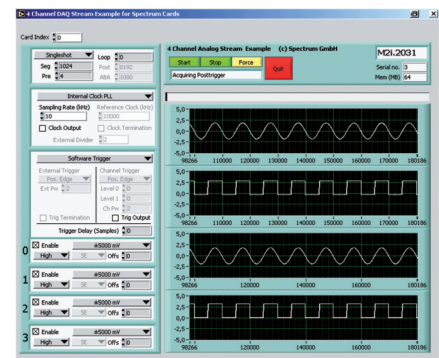
Access to the remote cards is done through a transparent internal link of the Spectrum driver. There is no difference in accessing remote cards from accessing local cards.



## LabVIEW

LabVIEW – the most common graphical programming language for measurement applications – is very well supported by the Spectrum digitizer hardware with the use of dedicated LabVIEW drivers. They combine different functions into functional blocks and make them available within LabVIEW. The LabVIEW driver package consists of several different dynamic libraries (LLBs) and some open example VIs showing the use of the driver. Besides these libraries all driver functions can also be directly called.

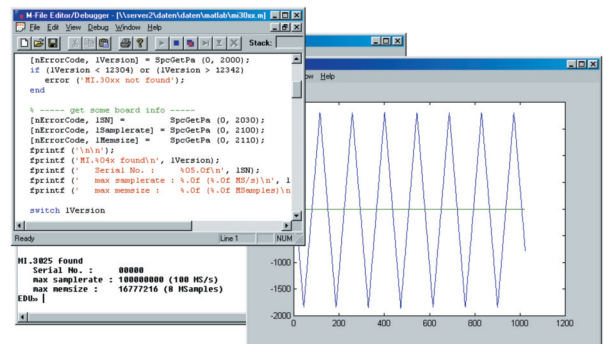
The LabVIEW driver supports all LabVIEW for Windows versions starting with LabVIEW 2009 up to the current version. All new product releases are installed on our test systems and all examples are immediately checked against the latest version.



## MATLAB

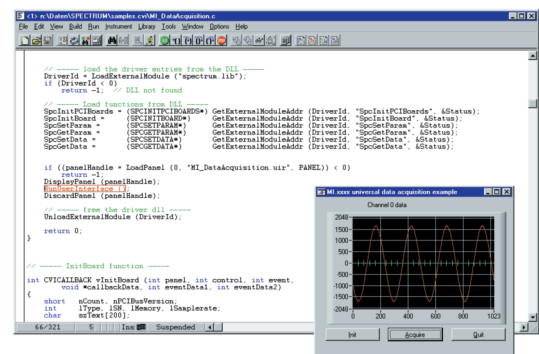
The math software packet MATLAB from The Mathworks Inc. is supported starting from version 7.7 (R2008b). Both Windows and Linux versions are supported. The MATLAB driver consists of a set of Mex-files to access the Spectrum library and a bunch of examples in m-language. All features of the hardware can be accessed. The interface also offers an easy way to use the Spectrum cards with Simulink.

For control of the Spectrum products under MATLAB only the base version of the software package is necessary, no additional software options and toolboxes are required.



## LabWindows/CVI

LabWindows/CVI offers an easy-to-use combination of graphical elements for controlling hardware as well as the display of measured data and an universal C-compiler. For a fast start with the Spectrum boards there are some universal examples showing how to include the Spectrum driver. There are some example applications integrated like a universal oscilloscope program and a universal signal generator. All programs are available as source code. LabWindows/CVI offers a fast way to develop graphical measurement applications including the performance of a C-compiler.



## IVI Drivers

All digitizer and AWG products from Spectrum for PCI, PCI Express and LXI bus also support the IVI class drivers IVI digitizer, IVI scope and IVI FGen. The IVI drivers allow users to access instruments of one function class with a common software interface independent of the manufacturer of the hardware. This makes it possible to use software, based on an IVI instrument driver, with many of the different digitizers or scopes available on the market.

## ▶ SDK's for text-based programming languages

The Spectrum standard API allows the access from various programming languages. The complete API is simple to use yet powerful in functionality. All programming is done using software registers and therefore only a handful of functions is needed. Including the API into a programming environment is a simple task.

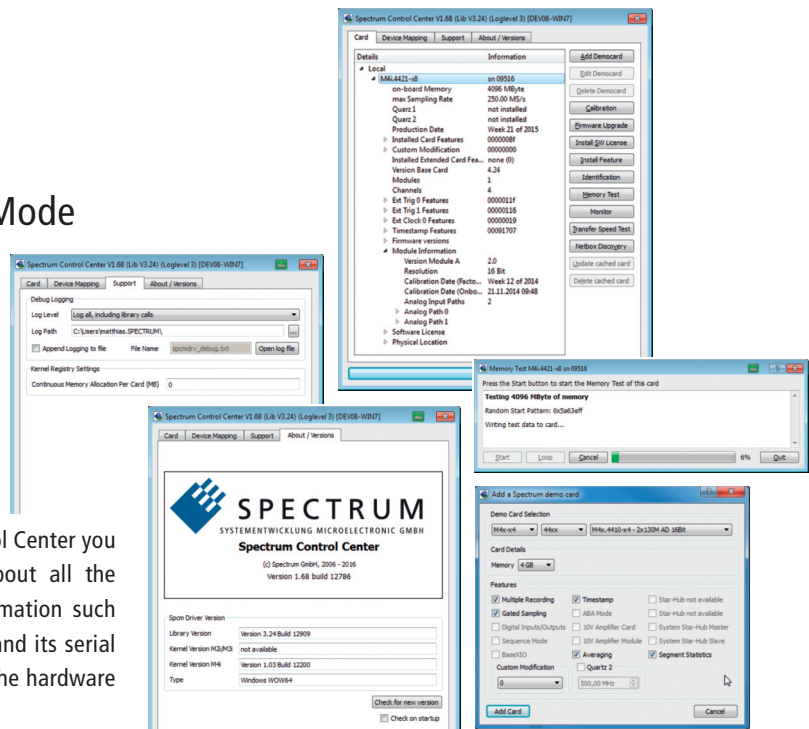
### Available Examples

Included in the delivery are examples for different measurement tasks for different programming environments. A huge number of setups is supported as a standard. This gives an easy and fast start with the programming:

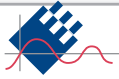
- Visual Studio C/C++, Gnu C++
- VB.NET, C#, J#
- Delphi
- Visual Basic
- Python
- Java

## ▶ Control Center and Demo Mode

A special card control center is available for the Spectrum M2i/M3i/M4i/M4x/digitizerNETBOX/generatorNETBOX driver as a stand-alone application and add-on for the drivers. This powerful tool is delivered with the cards and available under Windows and Linux and groups together all hardware maintenance functions:

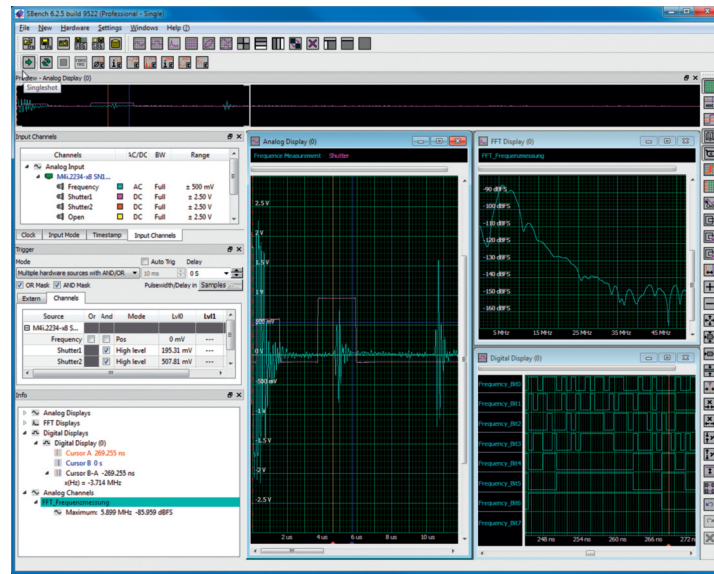


- **Hardware information:** Using the Control Center you can easily get the main information about all the installed Spectrum hardware: Basic information such as the type of card, the production date and its serial number as well as the installed memory, the hardware revisions or the installed firmware.
- **Installation of demo cards:** With the help of the card Control Center one can install demo cards in the system. A demo card is simulated by the Spectrum driver including data generation for acquisition cards. As the demo card is simulated on the lowest driver level all software can be tested including SBench, own applications and drivers for third-party products like LabVIEW.
- **Debug logging:** The setup of the card, driver and firmware version, all command sequences and other information can be logged to an ASCII file and can then be used for support cases.
- **Features and Software license:** SBench 6 software licenses as well as all optional features of the products, that do not require any hardware modifications, can be installed on fielded cards. The customer will get a personalized upgrade code for installation.
- **Firmware upgrade:** All supported products can have a later firmware upgrade to install new functions and to fix bugs. Firmware upgrade runs under Windows and Linux.
- **Calibration:** The card Control Center also provides an easy way to access the automatic card calibration routines of the Spectrum A/D converter cards. Depending on the used card family this can affect offset calibration only or also might include gain calibration.
- **Memory test:** The complete on-board memory of the Spectrum products is tested with randomized data for proper functionality. Any read or write errors are documented.
- **Transfer speed test:** Measures the bus transfer speed of an installed Spectrum card in the specific system. This gives you a performance index of the system and shows which sustained data rates can be reached.
- **Continuous memory:** Setup of the desired continuous memory buffer for the next system start.
- **Netbox Discovery:** find all digitizerNETBOX and generatorNETBOX products connected via LAN to this system. The Spectrum LXI products can be directly accessed, the integrated webserver can be called or a special monitor can be started.



This easy-to-use software provides convenient and fast data acquisition and analysis of GBytes of analog and digital data together with powerful export functions.

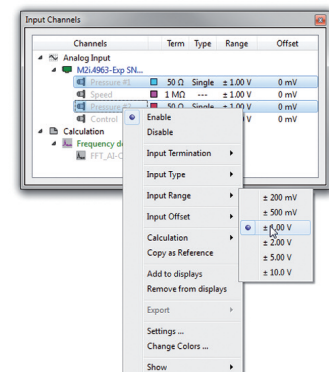
SBench 6 is powerful and intuitive interactive measurement software. SBench 6 allows you to commence making measurements immediately, without programming, and enables hardware setup, data display, oscilloscope, transient recorder, analysis and export functions all under one easy-to-use interface.



- Available for Windows 7 / Windows 8 / Windows 10 (32 / 64 bit)
- Available for Linux KDE / GNOME / Unity (32 / 64 bit)
- Fast data acquisition supporting RAID disk arrays
- Designed to acquire and handle GBytes of data
- Display of analog data (scope), X-Y data, chart recorder and frequency spectrum
- Integrated analysis functions
- Import and export filter
- Enhanced cursor functions
- Fast data preview function
- State-of-the-art drag-and-drop technology
- Thread based program structure, optimized to run with today's multi processor technology
- Easy usage with docking windows and context menus

## Setup Windows

All the hardware settings of the Spectrum instrument can be accessed using sophisticated tabbed setup windows. All setup windows can be docked whenever it is required to have a full overview of the configuration. Input signals can be scaled and given an individual unit to show real world measured values, compensating for sensor characteristics. The scaling and units are then used throughout the complete SBench software, be it in the display screen or in the calculation results. The look and feel of SBench 6 can be customized by locating setup widgets wherever necessary and by the individual configuration of toolbars and shortcuts. Each layout can be stored separately in a user file that can be used for future sessions of SBench 6.



## Acquisition and Replay

SBench 6 is able to act as a recorder as well as a generator front-end. The software is able to replay GBytes of either analog or digital data from various sources. Data can be imported from different file formats as well as using previously acquired data. SBench 6 automatically rescales and converts data to allow the mixed use of acquisition and replay cards of different resolutions and channel count.



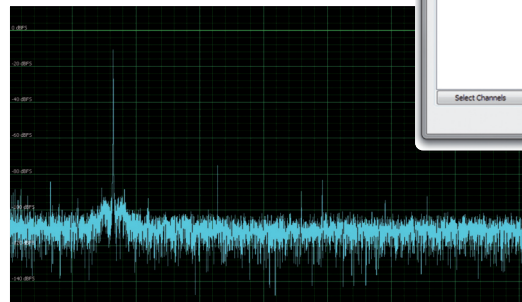
## Data Storage

The SBench 6 engine controls the complete data transfer whether into the PC RAM or onto hard disk. The streaming engine supports different binary formats that may be used for data storage. This eliminates all time-consuming conversion jobs after the end of the acquisition. Data files can be automatically split into smaller pieces even while writing data. SBench 6 has been optimized for working with multi GByte data files. The technology makes it possible for SBench 6 to handle data from up to 4 GBytes of on-board memory as well as hard disk recordings of several GBytes.

## FFT Analysis and Display

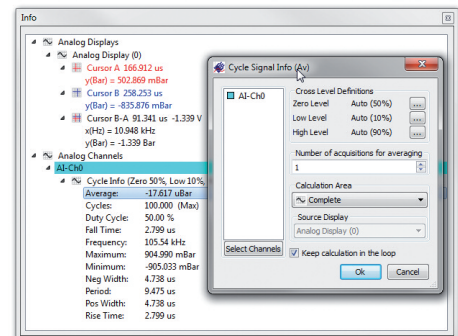
Using the FFT calculation turns the oscilloscope like software into a spectrum analyzer. The FFT function converts time domain signals into the frequency domain. The input signal can be weighted by different window functions like Hanning, Hamming, Blackman, etc., with the resulting FFT plot being shown as dBc, dBFS, dBuV, dBm or plain voltage. The resulting FFT signal can also be used for further calculations like SNR, THD, MAX value or others.

FFT Analysis, like all calculation functions, can run on full signals, on the visible signal area in one display or on a selected area between cursors.



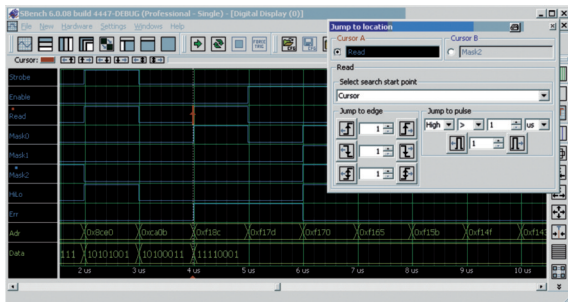
## Calculation Routines and Measuring Results

A special info window shows extended information on the current cursor positions within the display windows. Each cursor can be locked on a signal showing the precise values for the signal. Using both cursors makes it possible to obtain some simple measurement functions and, with only one mouse click, it is possible to use additional calculation routines on any signal. The signal used can be any acquired signal, any loaded signal or even a freshly calculated signal like an FFT, allowing fully nested calculations. The calculation area can be selected to be the whole signal, an area that is shown inside the display window, or the segment defined by the two cursor positions.



## Digital Data Display (Logic Analyzer)

Besides the acquisition and display of analog data SBench 6 also contains a powerful digital data display allowing to group signals to a bus and to navigate through data by edge detection and pulse measurements. The digital data display is available for pure digital acquisition cards as well as for additional digital inputs of an analog data acquisition card. Analog data can be converted to digital data and vice versa to combine different signals into a mixed mode display. Digital displays and analog displays can be synchronized to have cursor and zoom settings automatically synchronous between different displays for comprehensive Mixed Signal Analysis.

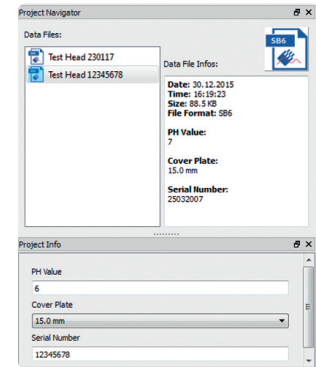


## Project Organization

The entire configuration, acquired data, reports, calculations and stored files are placed within a separate project folder. Projects can be used to organize measurement setups in production, to store, archive and share complete data sets, including all calculation and display details, or to generate default and write protected project templates for specific measurement jobs. A project is either stored as a set of sub-folders with separate files, that can be accessed individually, or it can be stored as a zip-archive which can be easily exchanged.

The project and also the separate data acquisitions can be extended by a user defined number of additional information fields. These can be made mandatory in cases that need to have a defined data set for each acquisition. The information fields can hold environmental details like temperature, used equipment, operator, additional test settings or it can be used to describe the DUT (device under test).

A project can hold a single acquisition as well as a number of automatically or manually stored acquisitions. All acquisitions can be found in a separate project data browser that also displays the acquisition information on the side.



## Reports

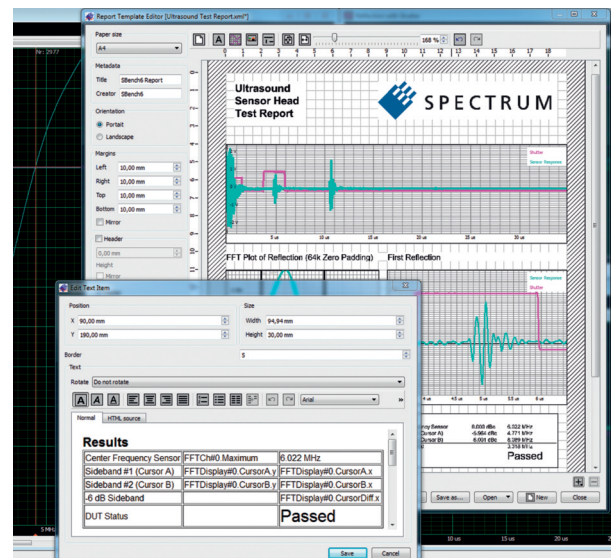
SBench 6 contains a powerful report editor and generator that documents the use of all components of SBench 6 for individual reports.

A report can contain analog, FFT, digital, histogram, spread and X-Y displays. Furthermore, all measurement results, cursor positions, project information, hardware information and the complete hardware configuration can be added to a report as single values or as overview tables.

Free text fields, lines and pictures can be used to add additional information to the report.

The report template itself is XML code and can be changed manually or archived with standard code managing software. The report is generated as a PDF-file and can be printed on any installed printer or stored as a pdf file. Different European and US paper formats are supported with freely definable borders, header and footer area.

The printout can be made in portrait or landscape format.



31

### Editor

**Spectrum Instrumentation GmbH**  
Ahrensfelder Weg 13-17,  
22927 Grosshansdorf / Germany  
Phone: +49 (0)4102-6956-0  
Fax: +49 (0)4102-6956-66  
E-Mail: info@spec.de  
www.spectrum-instrumentation.com

### Trademarks / registered trademarks

Microsoft, Visual Basic, Visual C++, Visual C#, Visual J#, Visual Studio, Windows, Windows XP, Windows Vista, Windows 7, Windows 8 and Windows 10 are trademarks or registered trademarks of Microsoft Corporation.  
LabVIEW and LabWindows/CVI are trademarks or registered trademarks of National Instruments Corporation.  
Delphi and C++Builder are trademarks or registered trademarks of Embarcadero Technologies, Inc.  
MATLAB is a trademark or registered trademark of The MathWorks, Inc.  
PCI-SIG, PCI, PCI-X and the PCI EXPRESS/PCIe design mark are registered trademarks and/or service marks of PCI-SIG.  
SBench, digitizerNETBOX and generatorNETBOX are registered trademarks of Spectrum Instrumentation GmbH.  
LXI and the LXI logo are trademarks of the LXI Consortium Inc.  
IVI is a registered trademark of the IVI Foundation.  
PICMG and CompactPCI are trademarks of the PCI Industrial Computer Manufacturers Group.  
PXI is a trademark of the PXI Systems Alliance.

### Changes and copyright

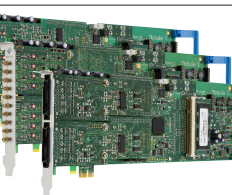
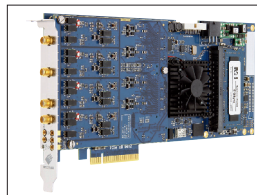
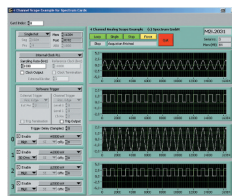
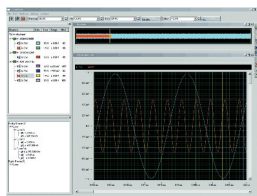
Additional adaptations and changes may be necessary to the products for their technical development. We take no liability for erroneous values or printing errors.

Copyright © 2016 by Spectrum Instrumentation GmbH. Reprinting and copying is only allowed with a written permission. All rights reserved.



## Spectrum worldwide

All products of Spectrum are available worldwide through local distributors. Contact details can be found on our homepage under [www.spectrum-instrumentation.com/en/worldwide-sales-contacts](http://www.spectrum-instrumentation.com/en/worldwide-sales-contacts)



- |                             |                               |
|-----------------------------|-------------------------------|
| Digitizer                   | digitizerNETBOX               |
| A/D Converter Boards        | generatorNETBOX               |
| Transient Recorders         | Arbitrary Waveform Generators |
| High-Speed Data Acquisition | Digital I/O Boards            |
| D/A Converter Boards        | Pattern Generators            |
| High-Speed Recorder         | SBench 6                      |

## Contact

- Our design engineers can be reached by telephone or by email: [support@spec.de](mailto:support@spec.de)
- Would you like to get a detailed quotation, application notes, data sheets or other information? Please call +49 (0)4102-6956-0 or email to [request@spec.de](mailto:request@spec.de)
- We are looking forward to your request!



### Spectrum Instrumentation GmbH

Ahrensfelder Weg 13-17 | 22927 Grosshansdorf | Germany  
Phone +49 (0)4102-69 56-0 | Fax +49 (0)4102-69 56-66  
[info@spec.de](mailto:info@spec.de)



### Spectrum Instrumentation Corp

15 Warren Street, Suite 25 | Hackensack, NJ 07601 | USA  
Phone +1 (201) 562-1999 | Fax +1 (201) 342-7598  
[sales@spectrum-instrumentation.com](mailto:sales@spectrum-instrumentation.com)

[www.spectrum-instrumentation.com](http://www.spectrum-instrumentation.com)

